

# Nell Shipman Collection



## HOW TO ORDER

On the Web: [www.boisestebooks.com](http://www.boisestebooks.com)  
(click on General Books)

By e-mail: [hhunsake@boisestate.edu](mailto:hhunsake@boisestate.edu)

By phone: (208) 426-1362

By fax: (208) 426-3401

By mail:

The Book Store (attn. Holly Hunsaker)  
Boise State University  
1910 University Drive  
Boise, ID 83725-1225  
USA



## THE IDAHO FILM COLLECTION HEMINGWAY WESTERN STUDIES CENTER

Boise State University  
1910 University Drive  
Boise, ID 83725-1525  
USA



Gregory  
Wolf  
LIP

# THE NELL SHIPMAN COLLECTION

Volume III: From Lionhead Lodge \$19.95

Last in the series of DVD's produced by the Idaho Film Collection at Boise State University and Pretty Good Productions of Coeur d'Alene, Idaho, *From Lionhead Lodge* includes the finest prints available of Shipman's surviving made-in-Idaho films:

## THE GRUB-STAKE

(1922; tinted, toned, with new score by The Bijou Orchestrette)



## WHITE WATER

(1924; tinted, new score by Philip Carli)



## WOLF'S BRUSH

(1924; tinted—titles and stills only)



## THE TRAIL OF THE NORTH WIND

(1924; b&w, music by Craig Purdy)



## THE LIGHT ON LOOKOUT

(1924; b&w, music by Craig Purdy)



Plus the following extraordinary "extras":

### AT LIONHEAD LODGE: NELL SHIPMAN IN IDAHO, 1922-1925

The definitive documentary of the Shipman Company, including never-before seen photographs, on-location footage, and interviews detailing the rise, fall, and resurrection of a remarkable and inspiring filmmaker.



### THE MAKING OF THE GRUB-STAKE

A short documentary by Barry Shipman, Nell Shipman's son, detailing the history of his mother's 1922 magnum opus.

### PRIEST LAKE HOME MOVIES

Never-before-seen scenes of Lionhead Lodge and Priest Lake from a 1928 b&w home movie and a short anthology of home movies (color) shot around Priest Lake circa 1950 (including shots of "Miss Priest Lake"!)

### THE DEDICATION OF SHIPMAN POINT

Television footage of the 1977 dedication of Shipman Point at Priest Lake. Includes interviews with Shipman's cameraman Joseph Walker, Shipman's son and granddaughter Barry and Nina Shipman, and Lloyd Peters, Shipman Company cast and crew member.

## THE SILENT SCREEN & MY TALKING HEART (3RD ED.)

Shipman's posthumously published autobiography with maps, photographs and drawings, afterword by Barry Shipman, essay by Peter Morris, filmography by D. J. Turner, endnotes and index.

\$24.95

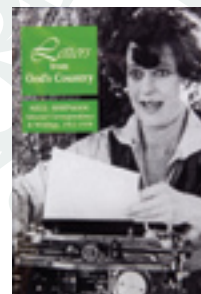


## LETTERS FROM GOD'S COUNTRY

Nell Shipman: Selected Correspondence & Writings, 1912-1970

"Whatever happened to Nell?" is answered in this collection culled from the Shipman Archive. Includes an essay by Annette Förster, b&w and color photos, maps, blueprints, glossary and index.

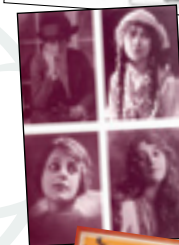
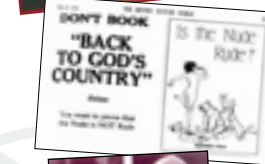
Paperbound \$29.95; Casebound \$59.95



## NELL SHIPMAN SILVER SCREEN POSTCARDS

14 b&w and color postcards (sizes vary) chronicling Shipman's life and films.

\$5.95



# MORE SHIPMANIA!

## THE NELL SHIPMAN COLLECTION

All Shipman films, now on DVD!

### Volume I: A Girl from God's Country

Includes Shipman's international hit, *Back to God's Country* (1919; tinted, electronic and traditional musical instrument score—with extracts from



the film's title song—by Lindsay Cooper. Also: *Awe Gee*, *Forgetting Me...Nell Shipman*, the award-winning Canadian television documentary. \$19.95

### Volume II: The Short Films

Includes Shipman's correctly tinted and edited feature-length Maxwell automobile race-and-chase across the Mohave Desert epic *Something New*, and Shipman's charming b&w two reeler, *A Bear, A Boy & A Dog*. Extras include the earliest known film shot by Shipman cameraman Joseph Walker, interviews and introductions by Nina Shipman and Gary Lacher, and *It Started with a Kiss*, an interview with Joan Benny.

\$19.95

