

CAMPUS STANDARDS AND DESIGN GUIDELINES - EXTERIOR MATERIALS

UPDATED: AUGUST 2024

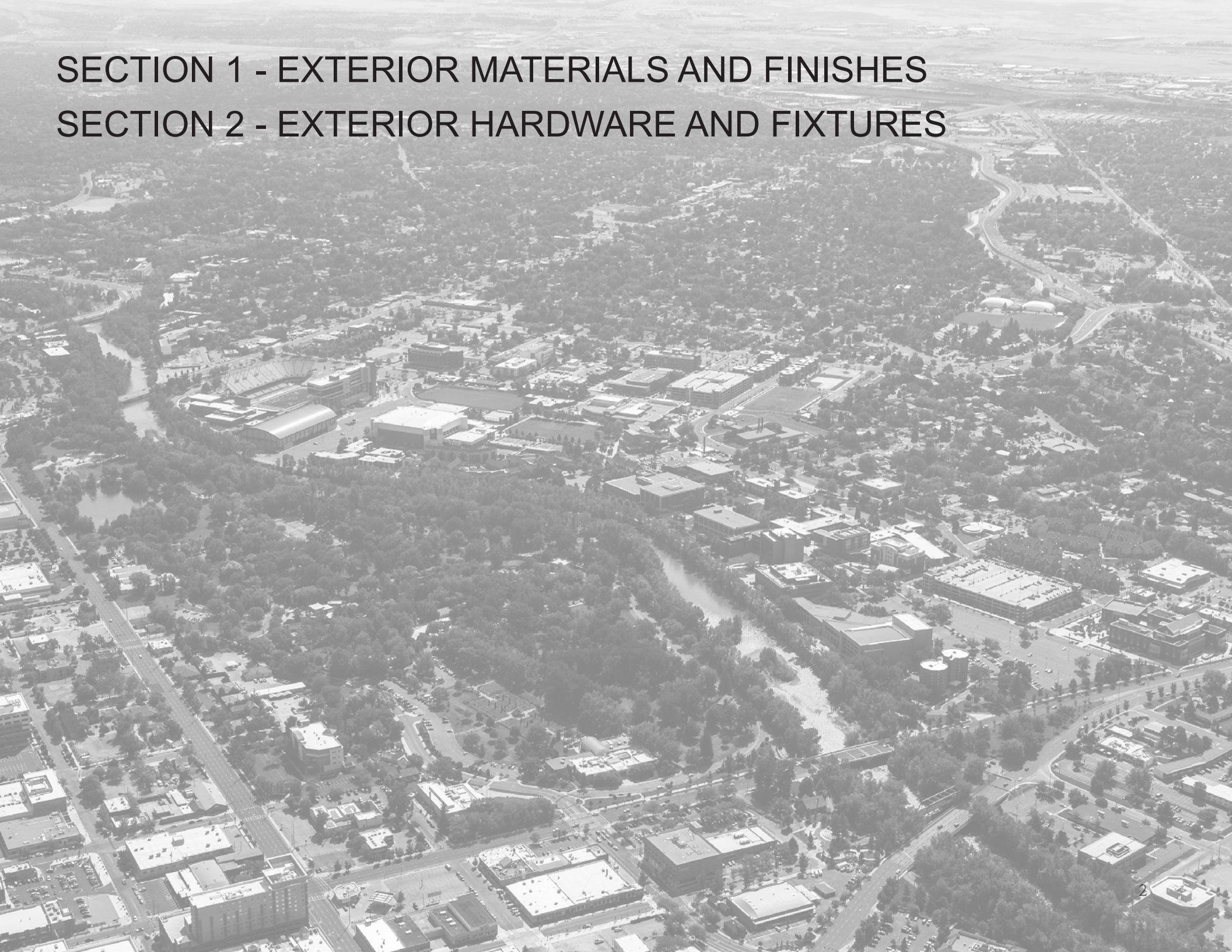


BOISE STATE UNIVERSITY

ARCHITECTURAL & ENGINEERING SERVICES

SECTION 1 - EXTERIOR MATERIALS AND FINISHES

SECTION 2 - EXTERIOR HARDWARE AND FIXTURES



EXTERIOR MATERIALS AND FINISHES

PRINCIPLES

THESE STANDARDS TAKE INTO ACCOUNT THE UNIVERSITY'S NEUTRAL COLOR PALETTE, BRANDED COLORS, AND BRONCO PRIDE TO CREATE A CONSISTENT AND COHESIVE FEEL ACROSS CAMPUS.

ITEMS COVERED:

Bricks

Concrete Mix

Sidewalks

Metal Facades

Fenestrations

BRICKS

All brick joints to be raked in a running bond pattern. Exposed mortar shall be washed aggregate consisting of natural sand or crushed stone.

*All Engraved Brick Patterns to be filled with Fundraisers Sports Brand filling in “Dove”

EXTERIOR FACADES

EFB1 - GENERAL SHALE BRICK INC. 85% COOPERSTOWN, 15% BALLPARK WITH SMOOTH / SATIN FINISH

EFB2 - INTERSTATE BRICK “BOISE STATE BLEND” WITH MATTE /GRAIN TEXTURE

PERMEABLE PAVERS

PPB1 - BASALITE, 5% LAMP BLACK, 95% MENDOCINO

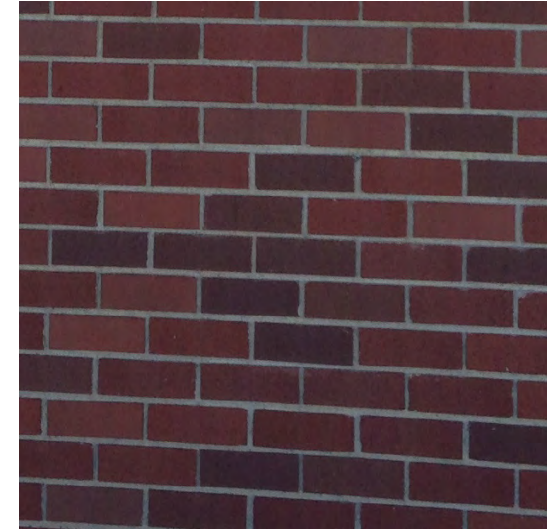
PPB2 - GENERAL SHALE BRICK INC., MATCH COLOR TO BASALITE (A MOCKUP MUST BE PROVIDED AND APPROVED BY AES BEFORE INSTALLATION)

PPB3 - BELGRADE AQUALINE, MATCH COLOR TO BASALITE (A MOCKUP MUST BE PROVIDED AND APPROVED BY AES BEFORE INSTALLATION)

*SUBSTRATE FOR PAVERS MUST BE COMPACTED TO 85%+



EXTERIOR FACADE EXAMPLE



EXTERIOR FACADE EXAMPLE



PPB1



PAVERS AT MCMR EXAMPLE

CONCRETE MIX

Contact AES for all projects on / near steam tunnels. A medium broom finish should be applied to all exterior concrete walkways.

For pours next to existing concrete control and expansion joints must line up with existing where possible. Rebar dowels must be inserted into existing slab where a new pour is adjacent to existing.

CONCRETE

C1 - 5,000 PSI COMMERCIAL DESIGN STRENGTH. SEE IMAGE FOR EXACT MIX

ALL STRUCTURAL CONCRETE MIXES ARE TO BE SELECTED BY THE STRUCTURAL AND / OR CIVIL ENGINEER. THE MIX LISTED HERE IS FOR SMALL, NON-STRUCTURAL PROJECTS ON CAMPUS THAT ARE NOT ENGINEERED

Material Code	Material Supplier	Material Description	Design Quantity
GREEN-#57	IMC	...GREEN #57 3/4" ROCK	1299 lb
GREEN-SND	IMC	...GREEN READY MIX SAND	1227 lb
GREEN-#8	IMC	...GREEN #8 3/8" PEACRAVEL	350 lb
AGD-4/II	ASHGROVE	...ASHGROVE I/II DURKEE	592 lb
PRAIRIE	BORAL	...PRAIRIE ASH	66 lb
WATER	WATER	...WATER	31.5 gal
P-322N	BASF	...POZZOLITH 322N	24 lq oz
MICRO-AE	BASF	...Master Air AE 200	2 lq oz
GLEN3030	BASF	...GLENIUM 3030 HIGH RANGE WATER REDUCER	25 lq oz
Total			0 lb

Tolerance			
Air Content	6	5.0 +/- 1.5%	Designed Unit Weight 140.5 lb/ft ³
Slump	6.00	8" MAX	Designed W/ C Ratio 0.00

C1 - CONCRETE MIX

SIDEWALKS

Sidewalks should be able to support the weight of any vehicle that would be expected to drive on the walks, see concrete standards for PSI specifications. Sidewalks should slope away from buildings at a 2% preferred slope, 5% maximum slope. Cross slopes should never exceed 5%. Path widths are listed as a guideline, final width to be determined by site.

SIDEWALK TYPES

TYPICAL -

-6'-10' WIDTH.

MULTI-MODAL - THESE WALKS CAN BE DESIGNATED BY DIFFERING MATERIALS SUCH AS CONCRETE PAVER / BRICKS OR SIMPLY BY SIGNAGE.

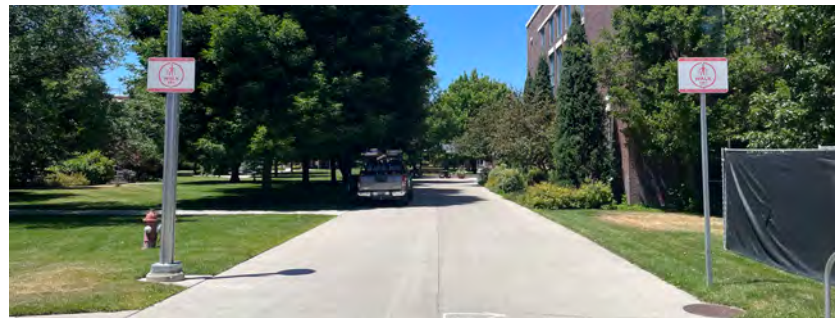
-10'-12' WIDTH.

PEDESTRIAN ONLY - SIGNAGE MUST BE USED TO DIFFERENTIATE PEDESTRIAN ONLY SIDEWALKS.

-6'-10' WIDTH.



TYPICAL - ON GREEN IN FRONT OF SUB



MULTI-MODAL - NEAR LIBRARY AND HEMINGWAY



PEDESTRIAN ONLY - NEAR APPLETON TENNIS CENTER

SIDEWALKS - CONT.

See previous page for notes on sidewalks

SIDEWALK TYPES

BICYCLE ONLY - THESE WALKS SHOULD HAVE A DARK GRAY INTEGRAL COLOR CONCRETE AND PAINTED BIKE LANES INDICATING DIRECTIONAL ARROWS, YIELDS, AND BIKE GRAPHICS.

-6'-10' WIDTH.



BIKE ONLY - NEAR SUB



SIGNAGE EXAMPLE AT A
PEDESTRIAN ONLY AND
BIKE ONLY SIDEWALK
INTERSECTION

METAL FACADES

Aluminium-faced composite wall panels and composite metal wall panels are acceptable for exterior facades on contemporary buildings. Consult with Architectural and Engineering Services (AES) for color selections.

ALUMINIUM-FACED WALL PANELS

APPROVED MANUFACTURERS:

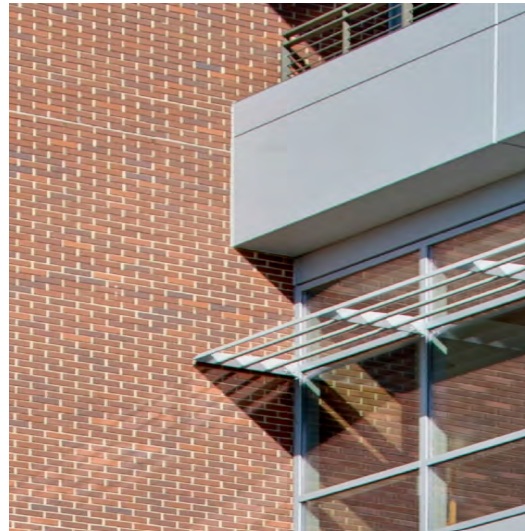
1. ELWARD SYSTEMS CORPORATION
2. ESC ALUCABOND ARCHITECTURAL WALL SYSTEM
3. RRDY200 HIGH PERFORMANCE ROUT AND RETURN DRY SYSTEM WITH PLUS CORE ALUCABOND

*LAP SEAM WALL PANELS MUST HAVE CONCEALED FASTENERS

COMPOSITE WALL PANELS

APPROVED MANUFACTURERS:

1. ELWARD SYSTEMS CORPORATION



FACADE EXAMPLE



FACADE EXAMPLE - MCMR



FACADE EXAMPLE - MCMR

FENESTRATION

Glazing is listed as a basis of design. Final glazing is subject to building design, site conditions, sustainability goals, etc.

GLAZING

G1 - GPPG AZURIA SURFACE PLUS
SOLARBAN 70XL LOW-E COATING, NUMBER 3
SURFACE, 1/4" THICKNESS

STOREFRONT WINDOWS

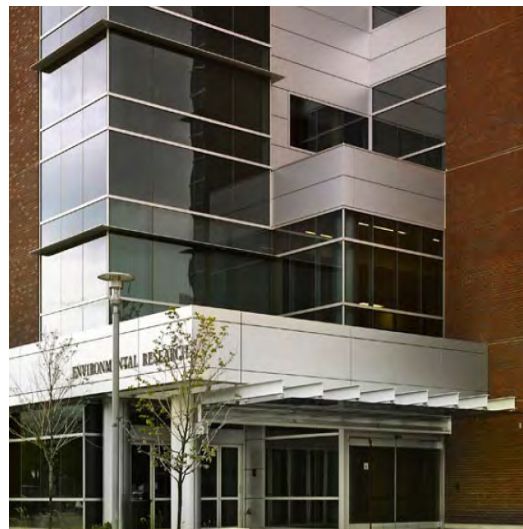
SW1 - KAWNEER NORTH AMERICA, TRIFAB
VG 451 / 451T (KAWNEER TO BE USED AS
INTERIOR STOREFRONT STANDARD AS
WELL)

ENTRANCE SYSTEMS

ES1 - TUFFLINE 500, WIDE STYLE (OR
APPROVED EQUIVELANT)



STOREFRONT / GLAZING EXAMPLE AT SUB



STOREFRONT / GLAZING EXAMPLE AT ERB

EXTERIOR HARDWARE AND FIXTURES

PRINCIPLES

THESE STANDARDS TAKE INTO ACCOUNT THE UNIVERSITY'S NEUTRAL COLOR PALETTE, BRANDED COLORS, AND BRONCO PRIDE TO CREATE A CONSISTENT AND COHESIVE FEEL ACROSS CAMPUS. THEY ARE SELECTED FOR EASE OF MAINTENANCE AND TO CREATE A SAFE AND SECURE CAMPUS.

ITEMS COVERED:

Skate Stops

Outdoor Seating

Handrails

Bicycle Racks

Bollards

Light Poles and Fixtures

Trash and Recycling Receptacles

Trash and Recycling Enclosures

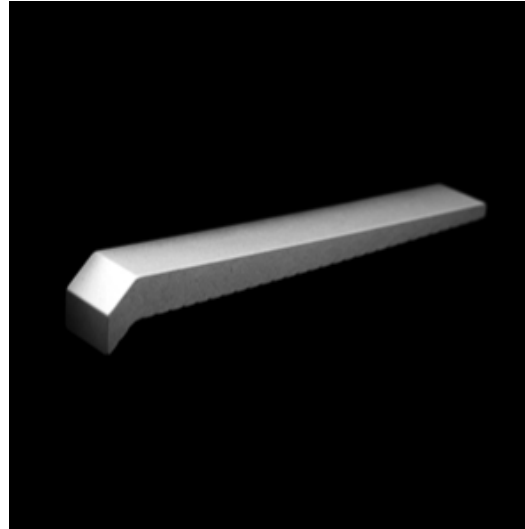
Fences

SKATE STOPS

Contact Architectural and Engineering Services for questions about these specifications.

SKATE STOPS

SS1 - GORILLA SERIES 135, SURFACE MOUNTED, IN "ALUMINIUM". (TO BE USED ON 1/2" OR GREATER CHAMFERED CORNERS)



SS1 - PRODUCT IMAGE



SS1 - INSTALLED ON CAMPUS



SKATE STOPS AT MCMR

OUTDOOR SEATING

Backed seating is preferred except in areas where bi-directional placement fits better within the site layout. Seating locations should be plentiful and convenient to promote their use.

Benches must be surface mounted to the concrete.

BENCHES

B1 - LANDSCAPE FORMS "SCARBOROUGH BACKED BENCH", 72" LENGTH, NO CENTER ARM, POLYESTER POWDERCOAT IN "SILVER"

B2 - LANDSCAPE FORMS "SCARBOROUGH BACKLESS BENCH", 72" LENGTH, NO CENTER ARM, POLYESTER POWDERCOAT IN "SILVER"



B1 - BACKED BENCH



B2 - BACKLESS BENCH

OUTDOOR SEATING - CAMPUS EXAMPLES



BACKED BENCH AT MCMR



BACKED BENCH AT THE SUB



PICNIC TABLES AT THE SUB



PICNIC TABLES AT LIBRARY



TABLE AND CHAIRS AT MCMR



STONE BENCH ON ADMIN LAWN

HANDRAILS

Contact Architectural and Engineering Services for questions about these specifications.

Preferred material for all handrails is Stainless Steel. Back-of-House rails can be painted steel.

HANDRAILS

HR1 - LUMENRAIL LED LIGHTED RAILING, LIGHTS IN “WARM WHITE” OR “NEUTRAL WHITE”, MECHANICAL NON-WELDED CONNECTIONS,

OTHER ACCEPTED MANUFACTURERS:

1. ULTRA-TEC CABLE RAILING
2. ARCHIMESH STAINLESS STEEL WOVEN WIRE RAILING



HR1 - AT ADMIN BUILDING



EXAMPLE RAILING AT SUB

BICYCLE RACKS

Contact Architectural and Engineering Services for questions about these specifications.

Bike racks must be mounted to the concrete one of two ways: 1. Embedded sleeve 2. Epoxy lag anchor.

BIKE RACKS

BR1 - DERO HOOP RACK, 35" HIGH 24" WIDE, GALVANIZED FINISH, IN GROUND MOUNT FOR NEW CONSTRUCTION, MOUNT ON EXISTING CONCRETE.

- 36" BETWEEN RACKS
- 36" BETWEEN RACKS AND BUILDING
- 4' BETWEEN ROWS (IF MULTIPLE ROWS).



BR1 - PRODUCT IMAGE



BR1 - INSTALLED ON CAMPUS

BOLLARDS

Contact Architectural and Engineering Services for questions about these specifications.

Bollard selection is dependent by location, function, and removability if needed.

BOLLARDS

B1 - *FOR USE IN PEDESTRIAN AREAS ONLY*
LANDSCAPE FORMS ANNAPOLIS SMART
BOLLARD, 6" DIAMETER, 33" HIGH, POWDER
COATED METAL IN "BLACK". (6" EMBEDDED
OR REMOVABLE AS NEEDED) (SOLAR
LIGHT ADDITION TO BE USED IN SPECIALTY
LOCATIONS)

B2 - *FOR USE IN SERVICE / UTILITY AREAS ONLY* FACILITIES / CONTRACTOR BUILT,
SCHEDULE 40 STEEL PIPE FILLED WITH
CONCRETE, 6" DIAMETER, 3'6" ABOVE
GRADE, PAINTED "YELLOW" OR "BLUE". (2'6"
EMBEDDED, MINIMUM)

BOLLARD COVERS - APPROVED MANUFACTURERS:

1. IDEA SHIELD POLYETHYLENE
THERMOPLASTIC BOLLARD COVER IN
"BLUE", 1/4" NOMINAL WALL THICKNESS



B1 - PRODUCT IMAGE (LIGHT)



B2 - UTILITY BOLLARD BLUE AT FOM



**B2 - UTILITY BOLLARD YELLOW
AT SOUTH CAMPUS LOT**

LIGHT POLES & FIXTURES

Contact Architectural and Engineering Services and the project Architect in regards to proper locations for Light Poles. Custom color match all light poles and fixtures with Tiger Powder Coatings, "Tiger Drylac 49/91260 Silver".

Round light poles available by AES approval.

LIGHT POLES

LP1 - ACUITY BRANDS LIGHTING, HOLOPHANE LINE, SITELINK SERIES ALUMINIUM POLE, "T2J" SHAFT STYLE, 12' HEIGHT, WITH BASE PLATE.

FIXTURES

F1 - LUMENPULSE BRAND, SPECTRA 7402 FIXTURE, "SPE7402".

F2 - U.S. ARCHITECTURAL LIGHTING BRAND, SOLID STATE AREA LIGHTING, CIRCULUX SERIES-LED, "CLX".



LP1 with F1 at Admin Lawn



F2 Product Image

TRASH & RECYCLING - RECEPTACLES

Contact Architectural and Engineering Services for questions about these specifications.

Receptacles should be plentiful and convenient to promote their use and promote environmental choices. Trash and Recycling receptacles must be surface mounted to the concrete.

TRASH RECEPTACLES

TR1 - LANDSCAPE FORMS SCARBOROUGH LITTER RECEPTACLE WITH SIDE OPENING AND VERTICAL STRIPE SIDE PATTERN, 25" DIAMETER, 40" HIGH, POLYESTER POWDERCOAT AND LINER IN "SILVER"

RECYCLING RECEPTACLES

RR1 - LANDSCAPE FORMS SCARBOROUGH LITTER RECEPTACLE WITH 5" SIDE OPENING AND "RECYCLABLE" SIGNAGE WITH LARGE RECYCLING SYMBOL, POLYESTER POWDERCOAT AND LINER IN "SILVER"



TR1 / RR1



TR1/RR1 - INSTALLED ON CAMPUS AT MCMR



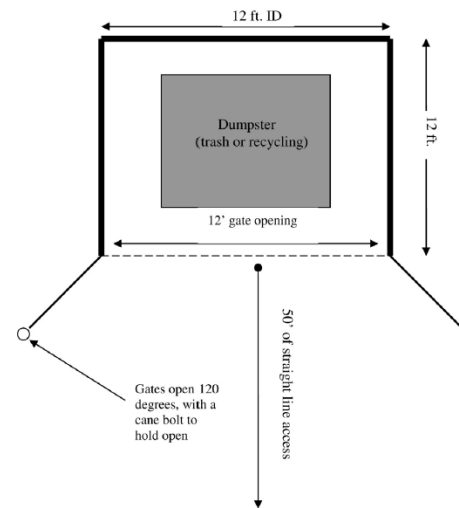
EXISTING VERSION ON CAMPUS

TRASH & RECYCLING - ENCLOSURES

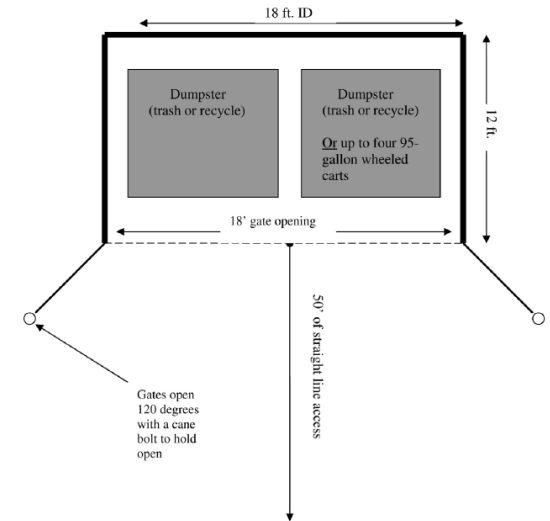
Contact Architectural and Engineering Services for questions about these specifications.

TRASH & RECYCLING ENCLOSURES

LAYOUT CRITERIA FOR SINGLE DUMPSTERS AND DOUBLE DUMPSTERS CAN BE SEEN IN IMAGES 1 AND 2. THESE ENCLOSURES CAN BE BRICK, CMU, OR METAL PANELS / SCREENS.



1. SINGLE DUMPSTER PLAN



2. DOUBLE DUMPSTER PLAN



CAMPUS EXAMPLE AT MCMR

FENCES

Contact Architectural and Engineering Services for questions about these specifications.

Plastic / PVC privacy slats allowed in chain link fences. Must be black or an approved dark blue, contact AES for questions on color selection.

FENCES

BLACK IS THE PREFERRED VINYL PAINT COLOR FOR METAL FENCES. CAN BE CHAIN LINK, IRON, OR ORNAMENTAL METAL PERMANENT FENCING.

IMAGES TO THE RIGHT SHOW GENERAL EXAMPLES FROM CAMPUS. THESE EXAMPLES CAN BE USED AS A BASIS OF DESIGN FOR FUTURE FENCE INSTALLATIONS.



FENCE AT BLEYMAIER
FOOTBALL CENTER



FENCE NEAR APPLETON
TENNIS CENTER



BOISE STATE UNIVERSITY

ARCHITECTURAL & ENGINEERING SERVICES