

# **CAMPUS STANDARDS AND DESIGN GUIDELINES - INTERIOR MATERIALS**

**UPDATED: AUGUST 2024**



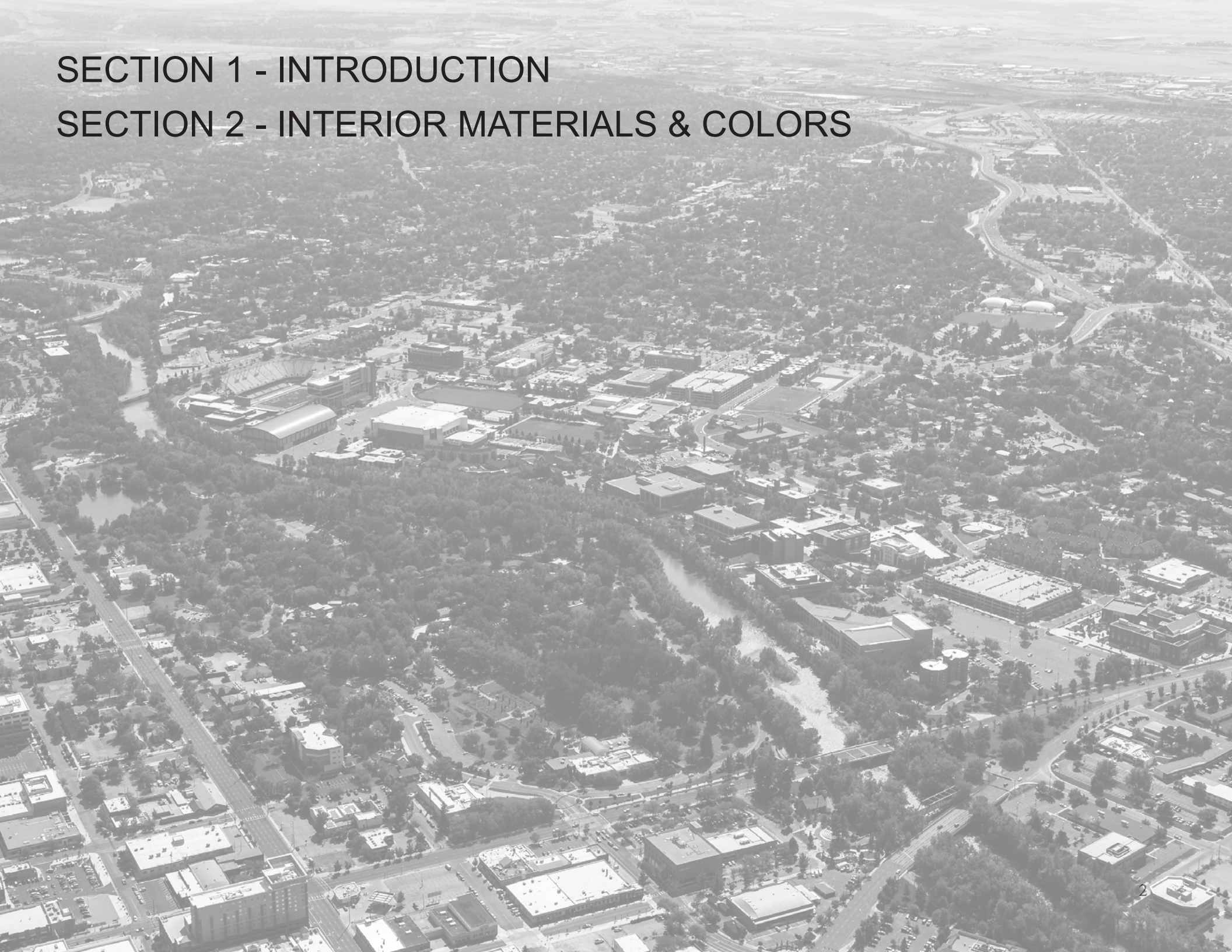
**BOISE STATE UNIVERSITY**

---

ARCHITECTURAL & ENGINEERING SERVICES

SECTION 1 - INTRODUCTION

SECTION 2 - INTERIOR MATERIALS & COLORS



# SECTION 1 - INTRODUCTION

# GENERAL NOTES

## **INTENT**

The Boise State University Campus Standards and Design Guidelines are standard and enforceable design guidelines for all design and construction work done on campus for use by in-house staff (architects, engineers, shops, etc.) and consultants. A coordinated effort between Campus Planning and Facilities staff has been made to compile these guidelines. They reflect the planning, construction and maintenance experience of persons responsible for the university facilities.

These guidelines are not intended to be a substitute for specifications prepared by design professionals and do not relieve any consultants from their responsibility to exercise due care in design and administration of Boise State University projects in a manner consistent with accepted standards of professional practice.

## **ORGANIZATION**

These guidelines are to be used in conjunction with the Construction Specifications. For more detailed technical data on components design consultants should refer to the Construction Specifications.

The Campus Standards and Design Guidelines are prepared and published by the departments of Campus Planning and Facilities; Architectural and Engineering Services and Operations and Maintenance.

## **MODIFICATIONS**

Adherence to the Design Guidelines and Construction Standards is mandatory unless a deviation has been approved in writing by the Boise State University Project Manager. Any equal or improved concept, method, or product will be given full consideration.

Sections of the Design Guidelines and Construction Standards will be revised and updated as experience or construction developments warrant.

# GENERAL NOTES

## **MATERIALS AND COLORS - OVERVIEW**

The materials, colors and finishes selected for Boise State University are a combination of long established elements of our campus and newer, more contemporary elements to allow continuity of materials and design, while also allowing an evolution of the palette with consistency and direction yet allowing innovation and growth.

These materials and colors are used both in new and existing facilities to improve familiarity and brand recognition for Boise State University while at the same time, providing high quality, innovative learning environments for students, faculty and staff. All areas on campus are high traffic, high use environments therefore, the materials must be of a quality and durability sufficient to provide long time use, while maintaining an appearance of representing a high quality urban university.

## **LANDSCAPE DESIGN PRINCIPLES - OVERVIEW**

The design of campus landscapes should adhere to the following principles:

Campus landscapes should require low maintenance. Campus landscapes should conserve irrigation water.

Drought-tolerant plant materials should be used wherever possible.

Drip irrigation should be used wherever practical.

For new planting areas, pre-emergent weed control should be provided beneath the landscape bark.

Grass should only be used in areas that are large enough to easily maintain.

Concrete mow strips should be provided where lawn abuts planted areas



# GENERAL NOTES



## BOISE STATE UNIVERSITY

### **BRAND**

In 1932, a group of students picked blue and orange as the school colors and the Bronco as the mascot. Boise State's heritage and tradition ring true today. The B logo as the University's signature mark represents the future, forward-moving direction of the university.

The Boise State Brand Standards establish consistent use of typography, colors and logos. Together, these elements provide instant recognition while conveying a sense of Boise State's character and style — the Boise State brand. A comprehensive identity program maintains the integrity of the Boise State brand and promotes maximum recognition and awareness of Boise State University.

The B logo is used judiciously and incorporated into the campus environment. It should only appear at main building entrances, lobbies and major exterior spaces, such as campus quads, plazas and nodes.

**For more information on the Boise State University Brand Standards visit: <https://www.boisestate.edu/brand/>**

# **SECTION 2 - INTERIOR MATERIALS & COLORS**

# INTERIOR MATERIALS

- THESE STANDARDS AIM TO CREATE A CONSISTENT AND COHESIVE FEEL ACROSS CAMPUS.
- THESE MATERIALS ARE TO BE USED AS A BASIS OF DESIGN FOR ALL PROJECTS ON CAMPUS.
- SHOULD ANY OF THESE MATERIALS BE DISCONTINUED EQUIVALENT PRODUCTS MAY BE SUBSTITUTED WITH AES APPROVAL.

## ITEMS COVERED:

Paint  
Carpet  
Walk-Off  
Wall Base + Transition Strips  
Vinyl Composite Tile  
Luxury Vinyl Plank  
Rubber Flooring  
Fabric  
Laminate  
Flush / Solid Wood Doors  
Solid Surfaces  
ACT/Acoustics  
Ceramic Wall Tile  
Ceramic Floor Tile  
Wall Protection  
Corner Guards  
Metals  
Window Shades and Blinds  
Window Film  
Bulletin Boards  
White Boards  
Curtains  
Polished Concrete



# PAINT

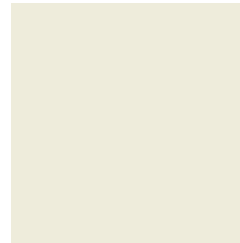
Boise State University has selected these standard paint colors to be used that coincide with the University's primary and secondary colors (blue and orange).

\*\*Paint at Bathrooms, Kitchens and areas of high-moisture to be Sherwin Williams Semi-Gloss

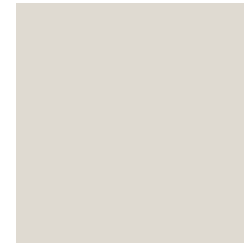
\*\*All other paint to be Sherwin Williams Eg-Shel

## FIELD COLORS

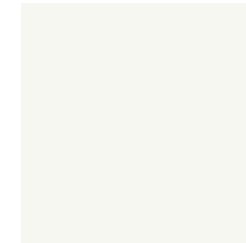
- ANCIENT IVORY, SW TO CUSTOM MATCH BENJAMIN MOORE
- CITY LOFT, SW7631
- HIGH REFLECTIVE WHITE, SW7757



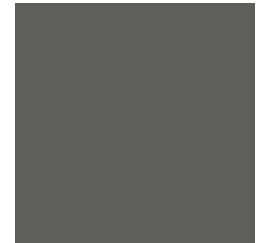
ANCIENT IVORY



CITY LOFT



HIGH REF. WHITE



ASPHALT GRAY

## GRAY COLORS

- ASPHALT GRAY, SW TO CUSTOM MATCH BEHR
- CALLIGRAPHY, SW TO CUSTOM MATCH BEHR



CALLIGRAPHY



BLUE CHIP



BLUEBLOOD



COMMODORE

## BLUE COLORS

- BLUE CHIP
- BLUEBLOOD
- COMMODORE



K.O. ORANGE



OBSTINATE ORANGE

## ORANGE COLORS

- KNOCKOUT ORANGE
- OBSTINATE ORANGE

# PAINT - GENERAL NOTES

**Only approved paint colors from the University color palette may be used at the following locations:**

Walls - Ancient Ivory, City Loft

Painted Ceilings - High Reflective White

Accent Walls - Asphalt Gray, Blues, Oranges

Trim - Asphalt Gray

**In general, accent paint shall only be approved under the following conditions:**

1. Only approved paint colors from the University color palette may be used.
2. Accent paint on walls must be approved by Architectural and Engineering Services.
3. Accent paint shall only be used as a main focal point to the room or as way-finding.
4. Accent paint must terminate at inside corners.
5. Under special circumstances such as specialty areas (dark rooms, AV backgrounds, theaters, etc), exceptions may be granted by AES or a delegated representative.

As a reminder, individuals cannot paint Boise State University spaces on their own. It is considered destruction of property owned by Boise State University and the State of Idaho. Individuals and/or departments could be held liable for such destruction.

# CARPET

Carpet standards for buildings on campus can vary, please contact Architectural and Engineering Services (AES) before specifying a product.

## CARPET TILE

**CT1** - SHAW HYPE TILE IN "DYNAMIC" 64481

**CT2** - SHAW REALM TILE IN "DISTANCE" 78597

**CT3** - J+J ADAPT 7602 IN "ROYAL PATH" 3275

**CT4** - J+J ADJUST 7601 IN "ROYAL PATH" 3275

**CT5** - J+J ADVANCE 7600 IN "ROYAL PATH" 3275

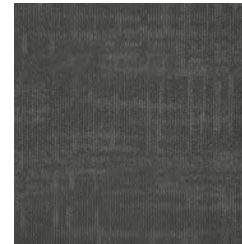
**CT6** - J+J ADAPT 7602 IN "CARBON PATH" 3274

**CT7\*** - SHAW INTENT IN "NOCTURNE" 08557

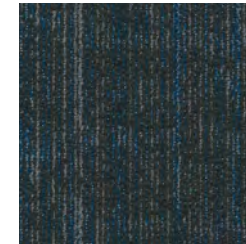
(LOW COST ALTERNATE)



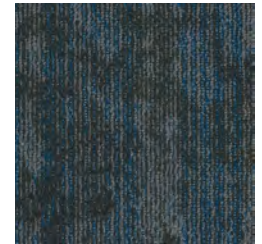
CT1



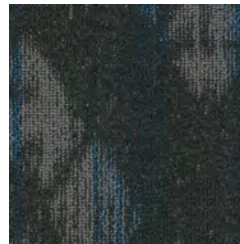
CT2



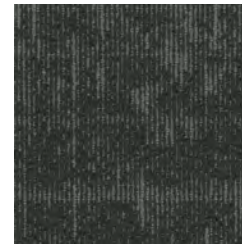
CT3



CT4



CT5



CT6



CT7\*



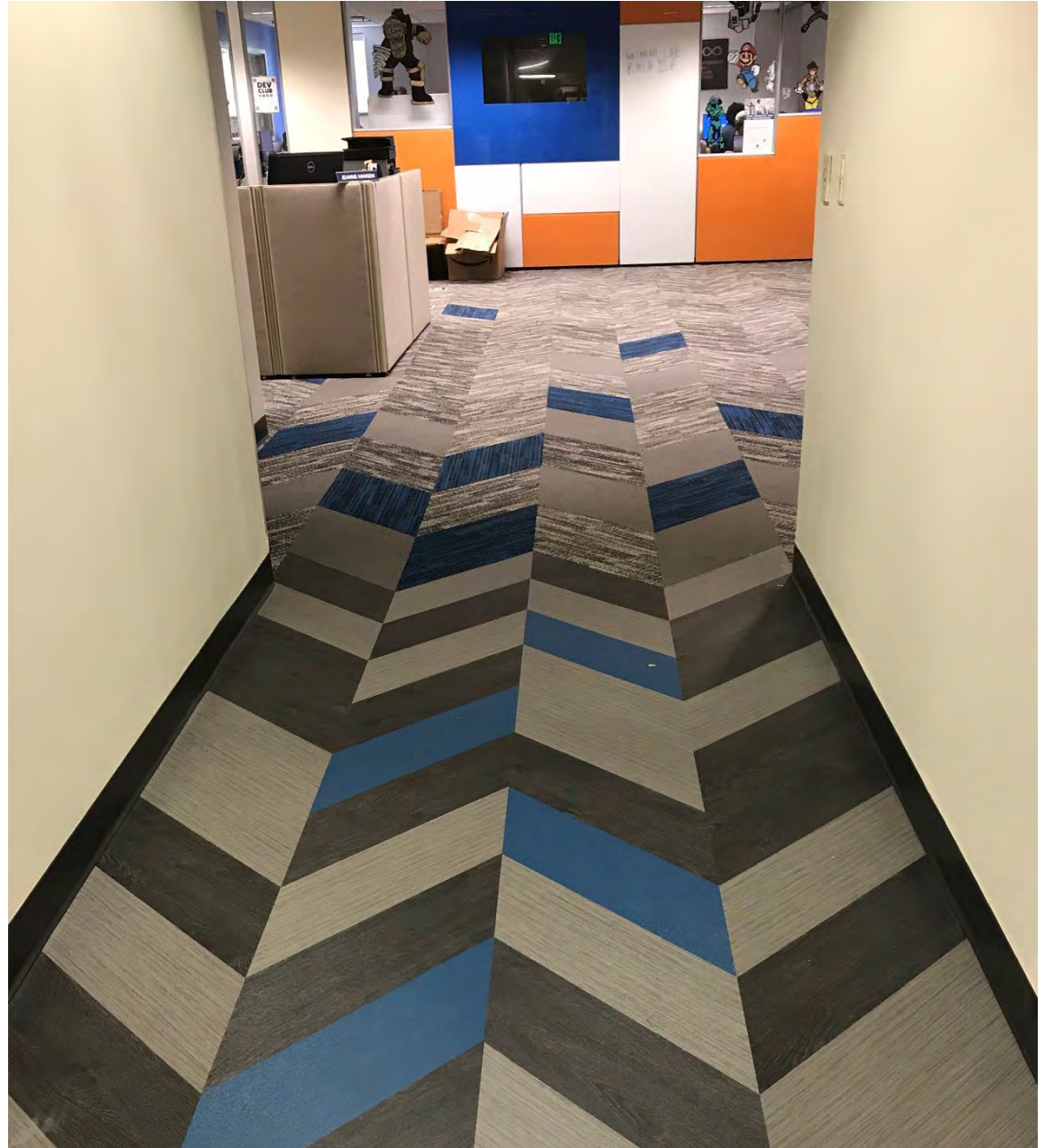
# CARPET - CAMPUS EXAMPLES



Children's Center



Student Union Building



\*THESE IMAGES ARE OF SPECIALTY AREAS ON CAMPUS. SHOWCASING WHAT CAN BE DONE (WITH AES APPROVAL.)\*

# WALK-OFF

Walk-off mat to be used at every exterior entry leading into a building. Walk-off mat may be used in elevators and exterior vestibules as well.

## **WALK-OFF MAT**

**WM1** - CONNEXUS SUPER NOP IN "GRIJIS/  
CHARCOAL"

**WM2\*** - MOHAWK FIRST STEP II IN "OBSIDIAN"  
989 (MORE EXPENSIVE OPTION)



WM1



WM2\*

# WALL-BASE + TRANSITION STRIPS

Transition strip color must always match wall base color.

## **RUBBER WALL BASE**

**WB1** - TARKETT RUBBER WALL BASE IN “BURNT UMBER” 063. 4” HEIGHT. (6” HEIGHT ACCEPTABLE IN LIMITED AREAS, WITH AES APPROVAL).



WB1



TS1

## **RUBBER TRANSITION STRIPS**

**TS1** - JOHNSONITE WHEELED TRAFFIC TRANSITION STRIP IN “BURNT UMBER” 063.

\*SIZE AND THICKNESS DETERMINED BY PROJECT.



# VINYL COMPOSITE TILE (VCT)

For additional technical details on these materials reference Boise State University's construction specifications.

All Armstrong Standard Excelon Imperial Texture (SEIT) tiles are 12"x12"x1/8".

## VINYL COMPOSITE TILE

**VCT1** - ARMSTRONG SEIT TILE IN "FIELD GRAY" 51927

**VCT2** - ARMSTRONG SEIT TILE IN "STERLING" 51904

**VCT3** - ARMSTRONG SEIT TILE IN "PERFECT STORM" 57551

**VCT4** - ARMSTRONG SEIT TILE IN "SOFT WARM GRAY" 51861

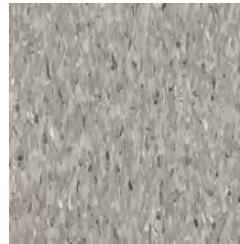
**VCT5** - ARMSTRONG SEIT TILE IN "SILK" 59234

**VCT6** - ARMSTRONG SEIT TILE IN "CIRQUE WHITE" 52513

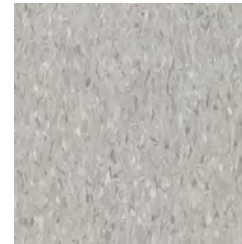
**VCT7** - ARMSTRONG SEIT TILE IN "BODACIOUS BLUE" 57517

**VCT8** - ARMSTRONG SEIT TILE IN "GENETIAN BLUE" 51946

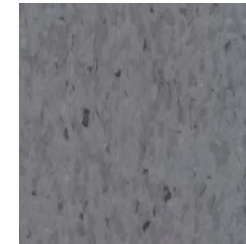
**VCT9** - ARMSTRONG SEIT TILE IN "SCREAMIN PUMPKIN" 57516



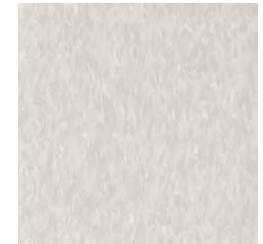
VCT1



VCT2



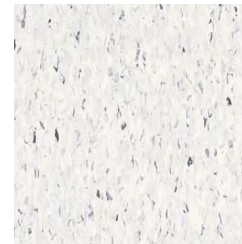
VCT3



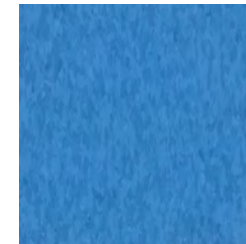
VCT4



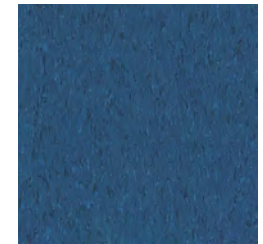
VCT5



VCT6



VCT7



VCT8



VCT9



# LUXURY VINYL PLANK (LVP)

Contact Architectural and Engineering Services (AES) for approval to use a Housing LVP in a non-Housing location. Wood-look LVP is for specialty areas only.

## LUXURY VINYL PLANK

**LVP1\*** - KARNDEAN DESIGN, DA VINCI  
COLLECTION IN "NATURAL OAK" RP102, 3MM  
LOOSE LAY GLUE DOWN

\*TYP USE IN HOUSING

**LVP2\*** - KARNDEAN DESIGN, CHARACTER  
IN "WALNUT" LLP315, 59"x9.85" LOOSE LAY  
LONG BOARD

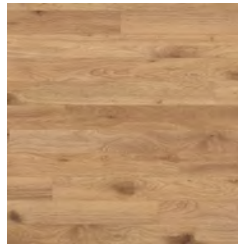
\*TYP USE IN HOUSING

**LVP3** - MOHAWK PREMIUM WOOD, LIVING  
LOCAL IN "WESTERN WOODS" 123, 2.5MM

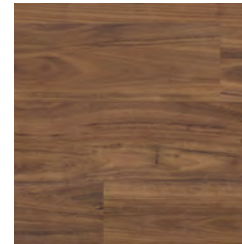
**LVP4** - SHAW PIGMENT DIRECT GLUE 0503V  
IN "BLUE" 65429

**LVP5** - SHAW PIGMENT DIRECT GLUE 0503V  
IN "CHARCOAL" 65595

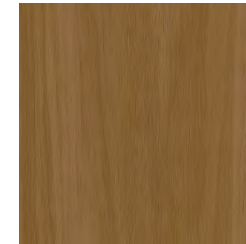
**LVP6** - SHAW PIGMENT DIRECT GLUE 0503V  
IN "GREY" 65530



LVP1\*



LVP2\*



LVP3



LVP4



LVP5



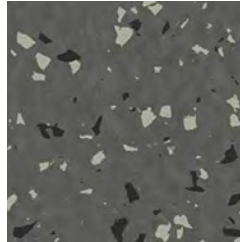
LVP6

# RUBBER FLOORING

For additional technical details on these materials reference Boise State University's construction specifications.

## **RUBBER FLOOR**

**RF1** - NORA SYSTEMS, NORAMENT GRAND IN  
"BLACK PEPPER" 5304



RF1

## **STATIC DISSIPATIVE**

**SD1** - HOMOGENEOUS SHEET VINYL,  
TARKETT OPTIMA IN "HARDWIRED" 874  
\*THIS OR SIMILAR PRODUCT REQUIRED IN  
LAB AREAS



SD1

# FABRIC

Consult AES for when and where to use these fabrics and for appropriate coordinating finishes. These fabrics are a basis of design, additional colors and patterns may be approved on a by-project basis.

## PATTERNED FABRIC

**PF1** - MOMENTUM KNACK IN "FILAMENT"

**PF2** - MOMENTUM KNACK IN "BRISK"

**PF3** - MOMENTUM HOP IN "ALLOY"

**PF4** - MOMENTUM HOP IN "MARINE"

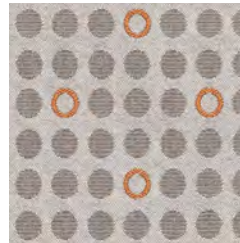
**PF5** - MOMENTUM ABEAM IN "BLAZE"

**PF6** - MOMENTUM ABEAM IN "NIGHTFALL"

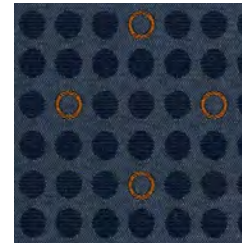
**PF7** - MOMENTUM GLIDE IN "KOI"

**PF8** - MOMENTUM GLIDE IN "CAPTAIN"

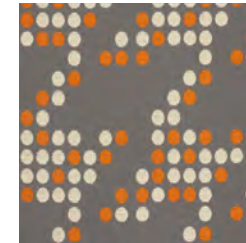
**PF9** - ARCHITEX ELEMENT IN "COBALT"



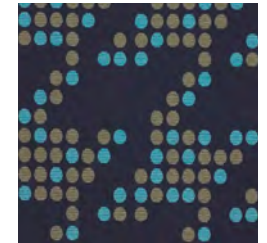
PF1



PF2



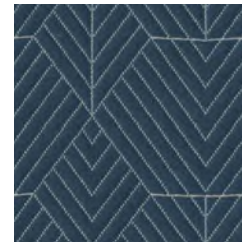
PF3



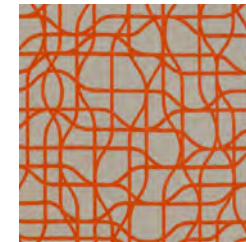
PF4



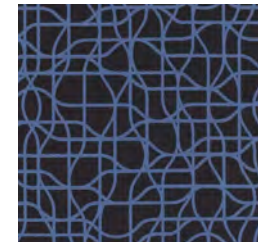
PF5



PF6



PF7



PF8

## SOLID FABRIC

**SF1** - MOMENTUM ODYSSEY C-ZERO IN "PRIMARY"

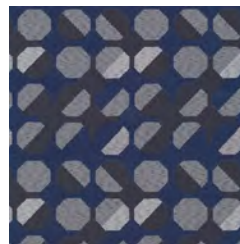
**SF2** - MOMENTUM ODYSSEY C-ZERO IN "RUE"

**SF3** - MOMENTUM ODYSSEY C-ZERO IN "CARBON"

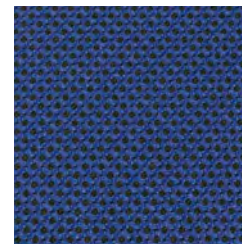
**SF4** - ARCHITEX DRAPER IN "CASH"

**SF5** - ARCHITEX DRAPER IN "SIXTH AVENUE"

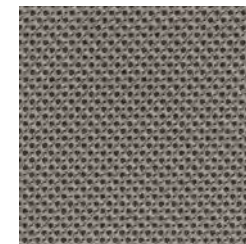
**SF6** - ARCHITEX DRAPER IN "STOCK CLUB"



PF9



SF1



SF2



SF3



SF4



SF5



SF6

# FABRIC - CONTINUED

See previous page for notes on fabrics.

## VINYL FABRIC

**\*VF1** - ARCHITEX AUTHENTEC

PERFORMANCE PRESCRIPTION IN “DUNBAR”

**VF2** - ARCHITEX AUTHENTEC PERFORMANCE

EVOLUTION IN “NAVY”

**VF3** - ARCHITEX AUTHENTEC PERFORMANCE

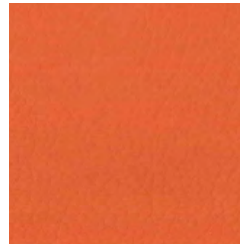
EVOLUTION IN “SCIENCE”

**\*VF4** - ARCHITEX HAPPY IN “CELEBRATE”

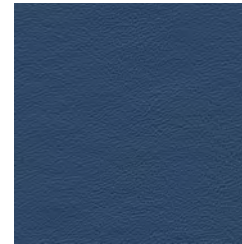
**VF5** - ARCHITEX HEALTHY IN “PILATES”

**VF6** - ARCHITEX HEALTHY IN “STRETCH”

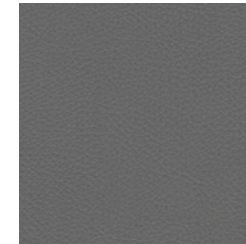
\*ORANGE VINYLs TO BE USED IN LIMITED  
LOCATIONS ONLY\*



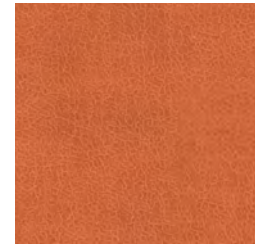
VF1



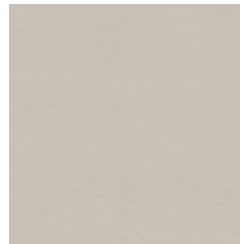
VF2



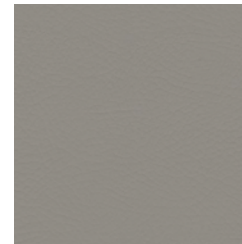
VF3



VF4



VF5



VF6

# LAMINATE

Chemical resistant plastic laminate to be used for wet-lab casework unless otherwise approved by AES.

## HORIZONTAL SURFACE LAMINATE

**HL1** - ARBORITE P396 IN "ARCTIC TUNDRA"

**HL2** - FORMICA 8958 IN "BUBBLE ART"

**HL3** - WILSONART 5035 IN "HANDSPUN SLATE"

**HL4** - FORMICA 3518 IN "FLINT CRYSTALL"



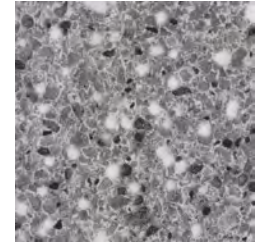
HL1



HL2



HL3



HL4

## VERTICAL SURFACE LAMINATE

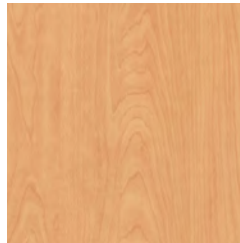
**VL1** - FORMICA 7012 IN "AMBER MAPLE"

**VL2\*** - WILSONART 7965 IN "WALNUT HEIGHTS"

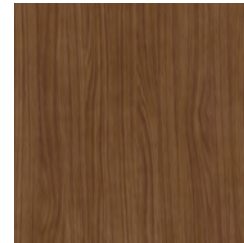
\*CONSULT AES FOR APPROPRIATE USES

**VL3\*** - WILSONART 7919 IN "AMBER CHERRY"

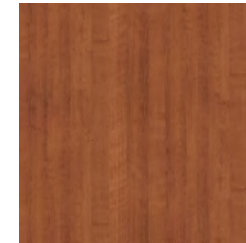
\*ONLY USE TO MATCH EXISTING, NOT FOR USE IN NEW CONSTRUCTION



VL1



VL2\*



VL3\*



# FLUSH / SOLID WOOD DOORS

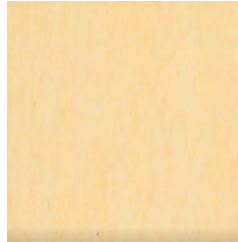
Consult with AES on locations where solid doors are necessary.

## **SOLID WOOD DOORS - COLORS**

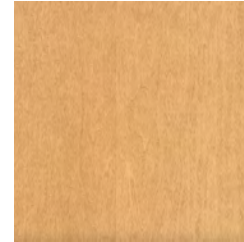
**SWD1** - VT DOORS BRAND, HERITAGE COLLECTION, WHITE MAPLE IN "GRASSLAND" GR18

**SWD2** - VT DOORS BRAND, HERITAGE COLLECTION, WHITE MAPLE IN "WHEAT" WH18. (TO BE USED TO MATCH EXISTING OR IN SPECIALTY AREAS ONLY)

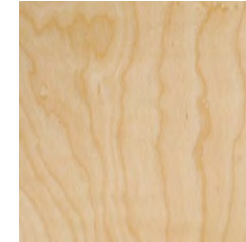
**SWD3** - MASONITE ARCHITECTURAL DOORS BRAND, FACTORY FINISHED STAINED WOOD DOOR IN "CLEAR"



SWD1



SWD2



SWD3

# SOLID SURFACES

For additional technical details on these materials reference Boise State University's construction specifications.

## SOLID SURFACES

**SS1** - WILSONART 9203CE IN "DUSK ICE"

**SS2** - WILSONART 9204CE IN "MORNING ICE"

**SS3** - DUPONT ZODIAQ IN "STORM GRAY"  
(NOW CORIAN QUARTZ)

**SS4** - CAMBRIA LUXURY SERIES IN "MAYFAIR"

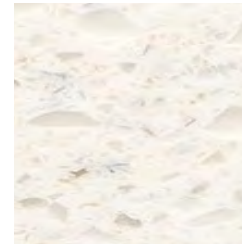
**SS5** - CAMBRIA SIGNATURE SERIES IN  
"TRAVELLA"

**SS6** - CAMBRIA SIGNATURE SERIES IN  
"CARRICK"

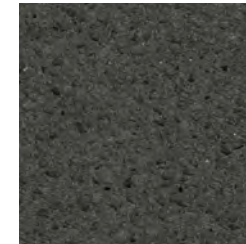
**SS7** - CAMBRIA CLASSIC SERIES IN  
"SEAGROVE"



SS1



SS2



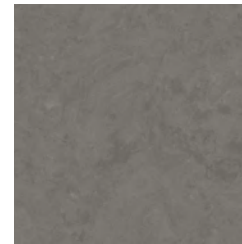
SS3



SS4



SS5



SS6



SS7



LS1

## LAB GRADE SURFACES

**LS1** - EPOXY DURCON IN "GRAPHITE"

\*THIS OR SIMILAR PRODUCT REQUIRED IN  
LAB AREAS



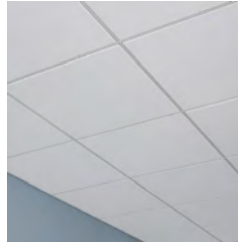
# ACOUSTIC CEILING TILE (ACT)

Consult Architectural and Engineering Services (AES) for where to use tegular tile. For existing projects match tile to what is already in the building. Contact AES with questions.

## ACOUSTIC CEILING TILE

**\*ACT1** - USG INTERIORS INC, MARS  
CLIMALPUS WITH SHADOW LINE TAPERED  
EDGE IN "WHITE". 15/16" EDGE. 2'x4'

**\*ACT2** - ARMSTRONG, ULTIMA WITH BEVELED  
TEGULAR EDGE IN "WHITE". 15/16" EDGE.  
2'x4'



ACT1



ACT 2

\*DIFFERENT THICKNESSES MAY BE  
USED DEPENDANT ON AN AREAS NEEDS.  
HALLWAYS OR AREAS WHERE SOUND  
TRANSFER IS NOT A CONCERN 1/2" WIDTH  
MAY BE USED OVER 3/4" WIDTH.\*

# CERAMIC WALL TILE

Consult Architectural and Engineering Services for specific locations wall tile can be used. Standard grouts (listed below) can be used with any standard tile unless noted otherwise. Bull-nose / cove tile at floor must match wall tile.

## WALL TILE

**WT1** - DALTILE COLOR WHEEL CLASSICS IN "BISCUIT" K175, 3X6. HORIZONTAL RUNNING BOND PATTERN. USE WITH GROUT **G1** - MAPEI IN "BISCUIT" 5014

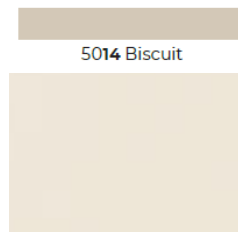
**WT2** - CEGI TILE, PINNACLE IN "ONYX", DALTILE # 9999468211. (FOR USE IN SPECIALTY LOCATIONS ONLY)

**WT3** - CONTEMPO WOW SOLO IN "GRAPHITE"

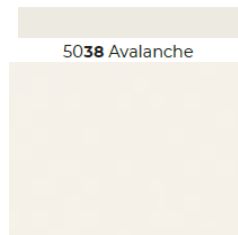
**WT4** - CONTEMPO WOW DUO IN "GRAPHITE" (FOR USE IN SPECIALTY LOCATIONS ONLY)

**WT5** - DALTILE COLOR WHEEL CLASSICS IN "WHITE" 0100, 3X6. USE WITH GROUT **G2** - MAPEI IN "AVALANCHE" 5038

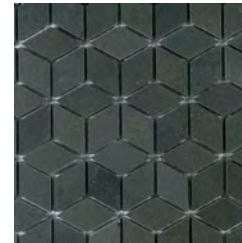
**WT6** - DALTILE STENCIL IN "INDIGO" SC38, 4X12. USE WITH GROUT **G3** - MAPEI "TIMBERWOLF" 5104 (FOR USE IN SPECIALTY LOCATIONS ONLY)



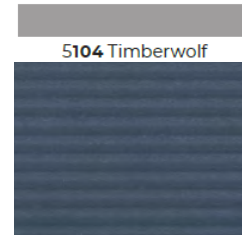
WT1 & G1



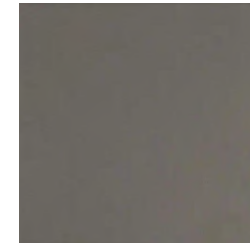
WT5 & G2



WT2



WT6 & G3



WT3



WT4

# CERAMIC FLOOR TILE

Consult Architectural and Engineering Services for specific locations wall tile can be used. Standard grouts (listed below) can be used with any standard tile unless noted otherwise.

## FLOOR TILE

**FT1** - AMERICAN OLEAN, UNGLAZED MOSAICS, "LIGHT SMOKE" 2X2. (TYPICAL IN BATHROOMS). USE WITH GROUT **G4** - MAPEI IN "COBBLESTONE" 5103

**FT2** - DAL TILE KEYSTONES IN "DESERT GRAY" D014. 2X2X1/4. USE WITH GROUT **G3** - MAPEI IN "TIMBERWOLF" 5104

**FT3** - DAL TILE QUARRY TILE IN "ARID GRAY" 0Q42, 6X6. USE WITH GROUT **G4** - MAPEI IN "COBBLESTONE" 5103

**FT4** - DAL TILE OUTLANDER GRANDE IN "STERLING" OU57, 12X24. USE WITH GROUT **G2** - MAPEI IN "AVALANCHE" 5038



FT1 & G4



FT2 & G3



FT3 & G4



FT4 & G2

# WALL PROTECTION

To be used in classrooms, conference rooms, breakout rooms, and other areas that need wall protection from chairs and tables.

## VINYL WALL PROTECTION

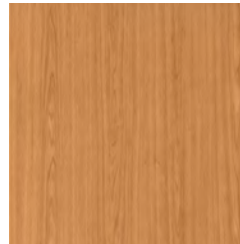
**VWP1** - ACROVYN CLASSIC MAPLE 372 (FOR USE IN SPECIALTY LOCATIONS ONLY)

**VWP2** - ACROVYN AMBER CHERRY 373 (FOR USE IN SPECIALTY LOCATIONS ONLY)

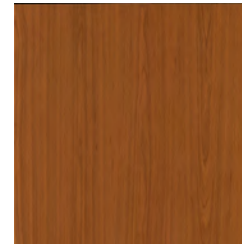
**VWP3** - ACROVYN FOG 265

**VWP4** - ACROVYN OZARK314

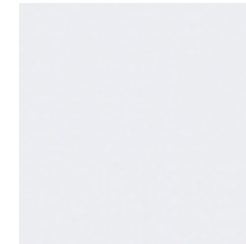
**VWP5** - ACROVYN CHARCOAL 162



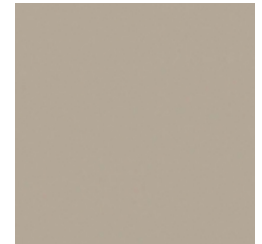
VWP1



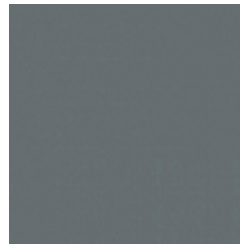
VWP2



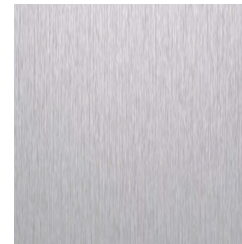
VWP3



VWP4



VWP5



CG\*

## CORNER GUARDS

\*CORNER GUARDS ARE TO BE STAINLESS STEEL #4 FINISH, 16 GAUGE, 48" HIGH, 1.5"x1.5"

OR

\***CG** - ACROVYN BRUSHED SILVER 410

# WINDOW SHADES

Most classrooms, offices, conference or meeting rooms, and laboratories will require shading devices. Contact AES if you have questions about a certain space's needs. This fabric is to be used with Draper Brand shading hardware or similar acceptable alternate.

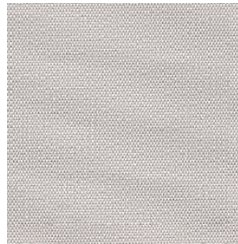
## WINDOW SHADES

**WS1** - MECHOSHADE "SOLAR-SHADE"

FABRIC LIGHT-FILTERING ROLLER SHADE IN  
"WHITE"

**WS2** - MECHOSHADE "BLACKOUT-SHADE"

FABRIC BLACK OUT ROLLER SHADE IN  
"WHITE", "SILVER", OR "SILVER BIRCH"



WS1



WS2

# WINDOW FILM

Window frosting / dusting is available through Boise State University's Sign Shop or local company Signs2U.

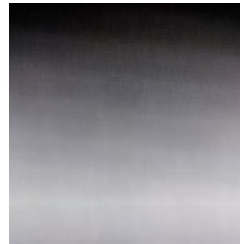
Appropriate window film is dependent on site conditions and desired outcome (heat gain / loss, privacy, bird strikes, aesthetics, etc). Consult with AES on all window film installations.

## WINDOW FILM

**WF1** - SOLYX SXJ-0561 FINE DOTS GRADIENT  
(FOR USE AT INTERIOR WINDOWS FOR  
PRIVACY)

**WF2** - HUPER OPTIK SELECT DREI WINDOW  
TINT (FOR USE AT EXTERIOR WINDOWS FOR  
SOLAR BLOCKING)

**WF3** - HUPER OPTIK CERAMIC 20 WINDOW  
TINT (FOR USE AT EXTERIOR WINDOWS FOR  
SOLAR BLOCKING)



WF1

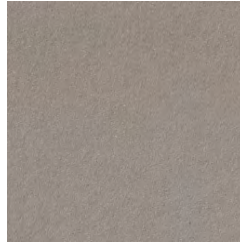
# BULLETIN BOARDS

Consult Architectural and Engineering Services for approval of bulletin board / tack board locations. Magnetic white boards also acceptable in lieu of bulletin boards. (See next page for whiteboard standards).

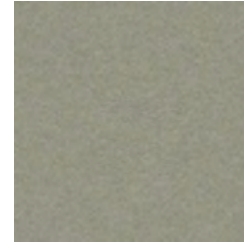
## **BULLETIN BOARDS**

**BB1** - FORBO BULLETIN BOARD IN “POTATO SKIN” 2182

**BB2** - WALL TALKERS TAC WALL IN “QUARRY” SMS21821



BB1



BB2



# WHITE BOARDS

Consult Architectural and Engineering Services for approval of whiteboard locations. Whiteboards are generally required in classrooms and are preferred in meeting / conference spaces.

## **WHITE BOARDS**

**WB1** - CLARIDGE PRODUCTS, LCS DELUXE PORCELAIN WHITEBOARD, WITH MAP RAIL AND TACK STRIP. SIZE DETERMINED BY PROJECT NEEDS.



WB1

# STAGE CURTAINS

For information on Window Shades see above pages. Curtains on windows as shade devices are NOT acceptable on campus. These curtains are for use in auditoriums, theaters, concert halls, etc. only.

## **STAGE CURTAINS**

### **SC1 - ROSE BRAND**

ENCORE 2022 BLACK DRAPE - 22OZ NAP

DOWN, "100%" FULLNESS WITH BOX PLEATS

POLY WEBBING ON TOP EDGE - 3"

WEBBING HARDWARE ON 12" CENTERS

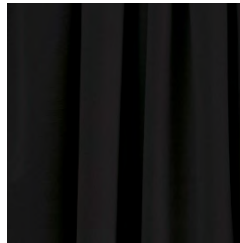
15OZ LINER SEWN TO TOP WEBBING -

CLOSED SIDES AND LOOSE BOTTOM

BOTTOM CHAIN HEM LINED - 5"

STAGE RIGHT AND LEFT FLAT HEM LINED - 2"

(USED AT THE MORRISON CENTER)



SC1

# POLISHED CONCRETE

Consult Architectural and Engineering Services for acceptable locations to install polished concrete.

Existing concrete on campus was not originally installed with the intent to be exposed therefore if polished the final appearance may not be uniform. Excessive polishing to produce a uniform result is NOT permitted.

## **POLISHED CONCRETE**

**PC1** - RETROPLATE SYSTEM, CLASS "A"

GRIND "CEMENT FINES" WITH LEVEL 1

GLOSS "FLAT (GROUND)"

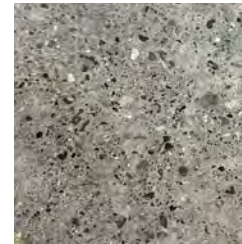
**PC2** - RETROPLATE SYSTEMS, CLASS "B"

GRIND "FINE AGGREGATE" WITH LEVEL 1

GLOSS "FLAT (GROUND)"



PC1



PC2



**BOISE STATE UNIVERSITY**

---

ARCHITECTURAL & ENGINEERING SERVICES