

## Boise State University 10<sup>th</sup> Day Profile of New Academic Transfer Students Fall 2006

**Note:** This profile reflects the statistics for new, degree-seeking, academic transfer students. The following groups are excluded from the cohort: nondegree-seeking, Bridge, second undergraduate and new transfers who started in Summer 2006.

### Yield Statistics

	Number	Percent
<b>New Transfer Apps</b>	2184	22.5% of all applications
<b>New Transfer Admits</b>	1686	77.2% of applicants
<b>New Transfer Enrolled</b>	1080	64.1% of admits

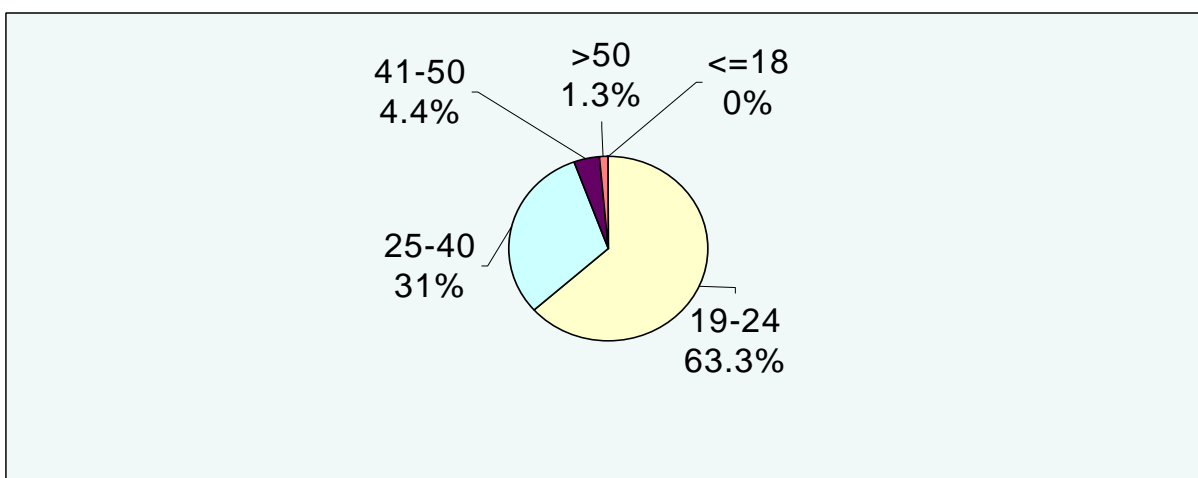
### Original Admission Classification

	Number	Percent
<b>Conditional/Special</b>	375	34.7%
<b>Regular</b>	656	60.7%
<b>Provisional</b>	49	4.6%

### Admitted/Enrolled on Probation

	Number	Percent
<b>Academic standing of probation</b>	109	10.1%

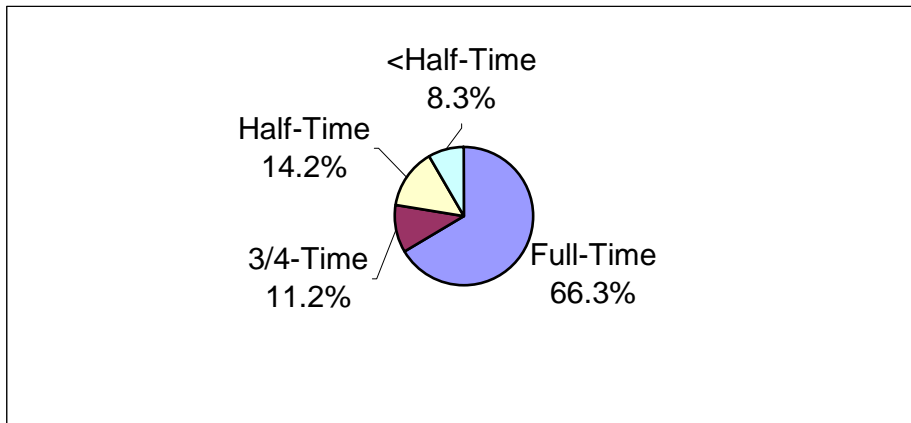
### Age



### Gender

	Number	Percent
<b>Female</b>	585	54.2%
<b>Male</b>	489	45.2%
<b>Undeclared</b>	6	.6%

### Credit Load



### Ethnicity

	Number	Percent
Asian American	31	2.9%
Black/African American	16	1.5%
Hispanic	61	5.6%
Native American	12	1.1%
White	860	79.6%
Did Not Respond	100	9.3%

### Citizenship

	Number	Percent
International	28	2.6%
Permanent Resident	15	1.4%
US Citizen	1037	96%

### Resident/Nonresident

	Number	Percent
Resident	829	76.8%
Nonresident	251	23.2%

**States sending the largest numbers of new degree-seeking transfer students**

<b>State</b>	<b>Number</b>	<b>Percent</b>
<b>Idaho</b>	388	35.9%
<b>Oregon</b>	131	12.1%
<b>California</b>	117	10.8%
<b>Washington</b>	69	6.4%
<b>Utah</b>	61	5.6%
<b>Arizona</b>	41	3.8%
<b>Nevada</b>	29	2.7%
<b>Texas</b>	25	2.3%
<b>Colorado</b>	21	1.9%
<b>Montana</b>	18	1.7%

**Colleges/Universities sending largest numbers of new degree-seeking transfer students**

<b>College/University</b>	<b>Number</b>	<b>Percent</b>
<b>College of Southern Idaho</b>	104	9.6%
<b>University of Idaho</b>	80	7.4%
<b>Idaho State University</b>	73	6.8%
<b>Treasure Valley Community College</b>	58	5.4%
<b>North Idaho College</b>	46	4.3%
<b>Brigham Young University-Idaho</b>	31	2.9%
<b>Lewis-Clark State College</b>	24	2.2%
<b>Brigham Young University</b>	18	1.7%
<b>Northwest Nazarene University</b>	15	1.4%
<b>Walla Walla Community College, WA</b>	11	1%
<b>University of Phoenix</b>	10	<1%
<b>Utah Valley State College</b>	10	<1%
<b>Albertson College, ID</b>	9	<1%
<b>Community College of Southern Nevada</b>	9	<1%
<b>Community College of the Air Force</b>	9	<1%
<b>Eastern Oregon University</b>	8	<1%
<b>Portland State University, OR</b>	8	<1%
<b>Salt Lake Community College</b>	8	<1%
<b>Utah State University</b>	8	<1%
<b>Univ of Maryland University College</b>	7	<1%
<b>University of Oregon</b>	7	<1%
<b>American River College, CA</b>	6	<1%
<b>Mesa Community College, AZ</b>	6	<1%
<b>Sierra College, CA</b>	6	<1%
<b>Weber State University, UT</b>	6	<1%
<b>Clark College, WA</b>	5	<1%
<b>Mt Hood Community College, OR</b>	5	<1%
<b>Lane Community College, OR</b>	5	<1%
<b>Park College, MO</b>	5	<1%
<b>Spokane Community College, WA</b>	5	<1%
<b>University of Alaska, Anchorage</b>	5	<1%
<b>University of Nevada, Las Vegas</b>	5	<1%
<b>University of Nevada, Reno</b>	5	<1%

**GPA of Last School Attended for new degree-seeking transfer students (not a cumulative GPA of all transfer institutions – just last attended)**

	<b>Number</b>	<b>Percent</b>
<b>&gt;=3.5</b>	209	19.4%
<b>3.0-3.49</b>	294	27.2%
<b>2.5-2.99</b>	225	20.8%
<b>2.0-2.49</b>	229	21.2%
<b>&lt;2.0</b>	123	11.4%
<b>Average GPA (last school)</b>		2.86

**College of Major**

