

Boise State University
10th Day Profile of New Academic Freshmen
Fall 2008

Notes: This cohort profile reflects the statistics for first-time, degree-seeking, academic students, including new freshmen who completed university courses while in high school. The following groups are excluded from the cohort: nondegree-seeking, concurrent high school, Bridge, second undergraduate degree and new students who started in Summer 2008.

Yield Statistics

	Number	Percent
New Freshmen Apps	4801	46.1%
New Freshmen Admits	3296	68.7%
New Freshmen Enrolled	2214	67.2%

Original Admission Classification

	Number	Percent
Admitted with in-progress or unofficial documents	1594	72%
Admitted with final documents	323	14.6%
Admitted with final documents with Provisions	297	13.4%

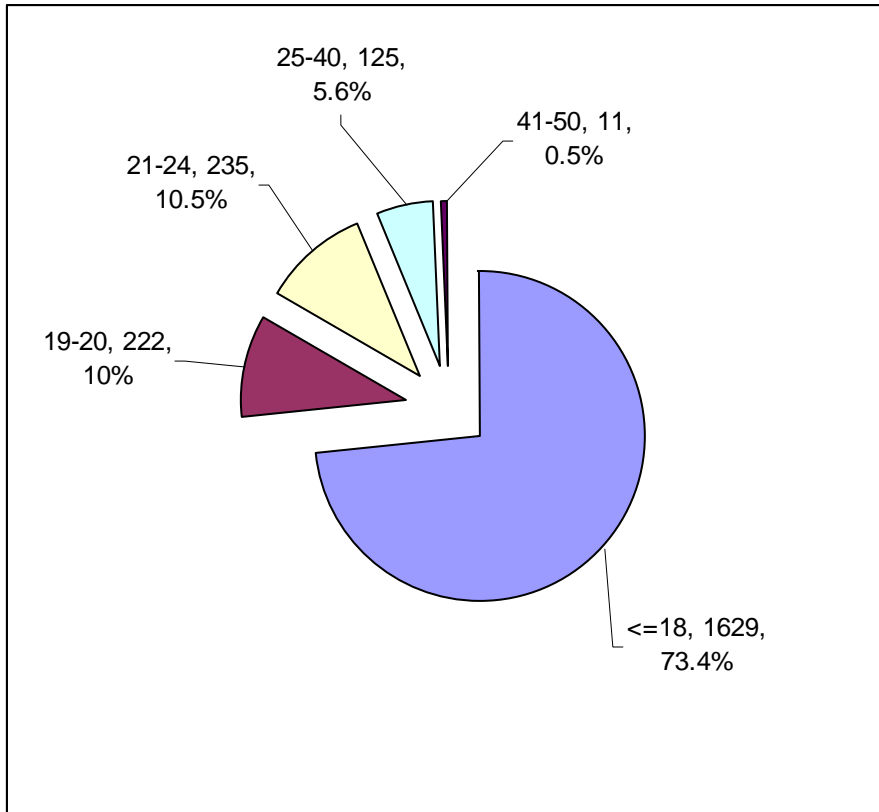
Denied Admission

	Number	Percent
Originally Denied	789	7.6%
Petitions Approved (included in Degree-seeking number)	8	1.0%
Admitted as Degree-seeking (includes petition & director's discretion)*	99	12.5%
Bridge	38	4.8%
Changed to Nondegree**	240	30.4%
Remain Denied	502	63.6%

*Of the petitioners accepted as degree-seeking 8, or 100% enrolled

**Of the students admitted as Nondegree-seeking 164, or 68.3% enrolled

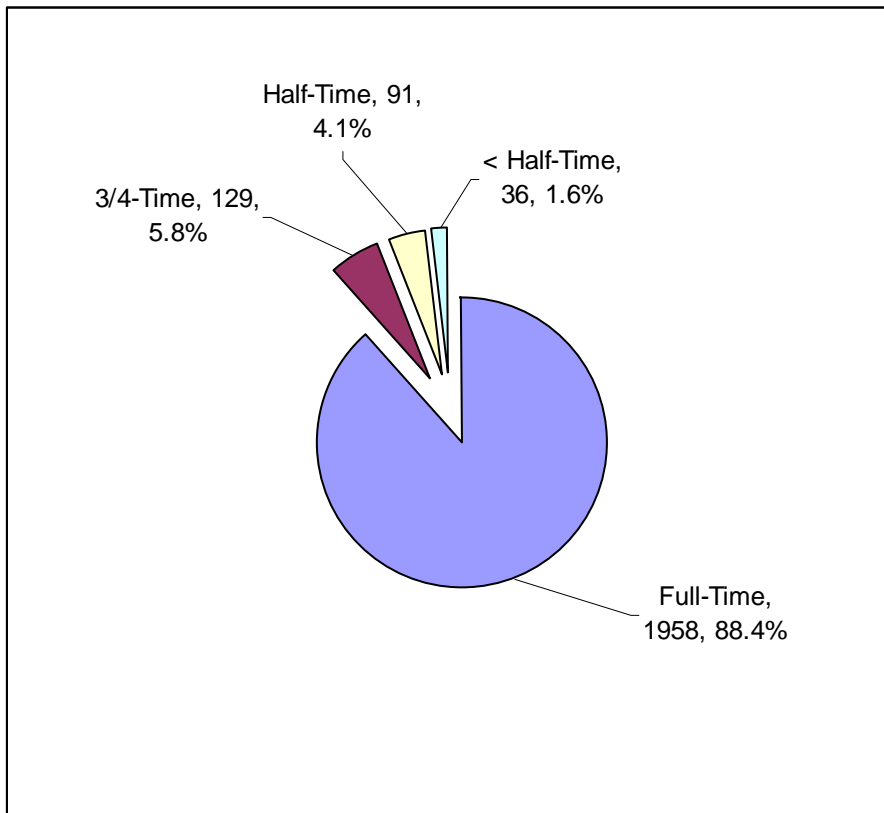
Age



Gender

	Number	Percent
Female	1226	55.4%
Male	984	44.4%
Undeclared	4	0.2%

Credit Load



Ethnicity

	Number	Percent
Asian American	90	4.1%
Black/African American	29	1.3%
Hispanic	147	6.6%
Native American	25	1.1%
White	1813	81.9%
Did Not Respond	110	5.0%

Citizenship

	Number	Percent
International	25	1.1%
Permanent Resident	47	2.1%
US Citizen	2142	96.8%

Top Countries (from country of citizenship)

	Number	Percent
1. United States of America	2187	98.8%
2. Canada	3	0.1%
3. China	3	0.1%
4. Saudi Arabia	3	0.1%
5. Vietnam	2	.09%
6. Spain	1	.05%
7. Hong Kong	1	.05%
8. Japan	1	.05%
9. Korea	1	.05%
10. Mexico	1	.05%
11. Norway	1	.05%
12. Pakistan	1	.05%
13. Poland	1	.05%
14. Russia	1	.05%
15. Uganda	1	.05%
16. Venezuela	1	.05%
17. Germany	1	.05%
18. Indonesia	1	.05%
19. Malaysia	1	.05%
20. Netherlands	1	.05%
21. Romania	1	.05%
Number of Countries Represented	21	

Dropped off: Australia, France, Austria, Denmark, Great Britain, and India

Resident/Nonresident

	Number	Percent
Resident	1780	80.4%
Nonresident	434	19.6%

Top States (from original permanent address)

	Number	Percent
1. Idaho (1)	1749	79%
2. Washington (2)	92	4.2%
3. Oregon (4)	87	3.9%
4. California (3)	64	2.9%
5. Nevada (5)	38	1.7%
6. Montana (6)	24	1.1%
7. Colorado (11)	19	0.9%
8. Alaska (7)	16	0.7%
9. Utah (8)	12	0.5%
10. Hawaii (11)	11	0.5%
11. Wyoming*	10	0.5%
12. Texas (10)	9	0.4%
12. Arizona (9)	9	0.4%
14. South Dakota (13)	5	0.2%
15. Wisconsin*	4	0.2%
New Mexico*	2	0.09%
Total US States Represented	37	

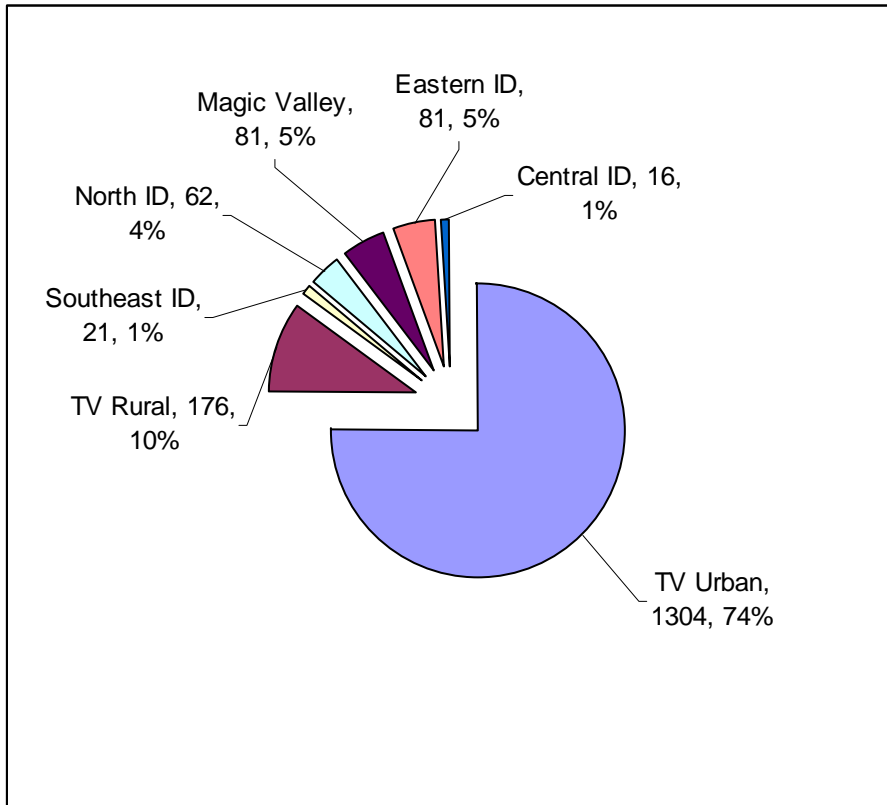
*Not in last years top 15

Top Cities

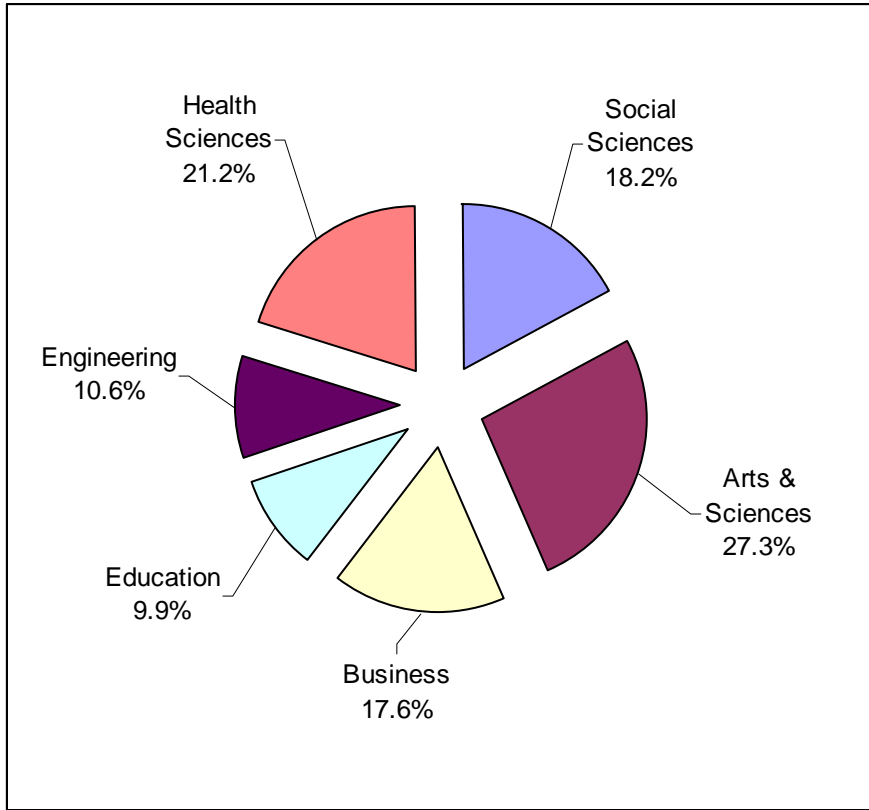
	Number	Percent
1. Boise (1)	715	32.3%
2. Meridian (2)	216	9.8%
3. Nampa (3)	154	7.0%
4. Eagle (4)	100	4.5%
5. Caldwell (5)	71	3.2%
6. Mountain Home (8)	48	2.2%
7. Kuna (7)	41	1.9%
8. Idaho Falls (6)	38	1.7%
9. Emmett (9)	27	1.2%
10. Star*	21	0.9%
11. Twin Falls (11)	17	0.8%
12. Coeur d'Alene*	13	0.6%
12. Blackfoot*	13	0.6%
13. Sandpoint*	11	0.5%
13. Middleton (14)	11	0.5%
16. Parma*	10	0.5%
16. Hailey*	10	0.5%

*Not in last years top 15. Dropped off: Pocatello, Payette, Fruitland, Wieser, Homedale, Jerome, and Melba.

Idaho Recruitment Regions:



College of Major*



*Some majors are owned by more than one college, so there are more people than the overall enrolled number. Therefore, the percentages equal more than 100 percent.

Top Majors

	Number	Percent
Undecided	183	8.3%
Pre-Nursing	136	6.1%
Business-Undeclared	100	4.5%
Biology	86	3.9%
Pre-Medical	82	3.7%
Elementary Education	70	3.2%
Business & Economics	70	3.2%
Psychology	64	2.9%
Mechanical Engineering	56	2.5%
Athletic Training	56	2.5%
Engineering	55	2.5%
Communications	52	2.3%
Computer Science	50	2.3%
Education	47	2.1%
Criminal Justice	46	2.1%
Pre-Physical Therapy	44	2.0%
Social Work	42	1.9%
Marketing	38	1.7%
Health Science Studies	34	1.5%

Years From High School

	Number	Percent
Straight from High School	1758	79.6%
1 Year From High School	122	5.5%
2 Years from High School	48	2.2%
3 Years from High School	67	3.0%
4 Years from High School	45	2.0%
5-10 Years from High School	102	4.6%
More than 10 Years	68	3.1%

Top High Schools

	Number	Percent
1. Borah (3)	124	5.6%
2. Mountain View (2)	121	5.5%
3. Capital (1)	120	5.4%
4. Eagle (7)	117	5.3%
5. Centennial (5)	108	4.9%
6. Meridian (8)	98	4.4%
7. GED Idaho (4)	76	3.4%
8. Boise (6)	72	3.3%
9. Timberline (9)	70	3.2%
10. Kuna (13)	41	1.9%
11. Skyview (10)	40	1.8%
12. Vallivue (14)	38	1.7%
13. Mountain Home (15)	36	1.6%
14. Nampa (11)	33	1.5%
14. Foreign HS *	33	1.5%
16. Cole Valley Christian*	28	1.3%
17. Caldwell (11)	27	1.2%
17. Bishop Kelly (18)	27	1.2%
19. Emmett (15)	26	1.2%
20. Columbia*	21	0.9%
21. Idaho Falls (17)	19	0.8%

Dropped off: Middleton, GED, and Skyline

High School GPA

	Number	Percent
4.0	60	2.7%
>=3.5 (includes 4.0)	768	34.7%
3.0-3.49	826	37.3%
2.5-2.99	385	17.4%
2.0-2.49	81	3.7%
<2.0	5	0.2%
Average GPA (straight from high school)		3.35
Average GPA (overall new freshmen)		3.31

High School Class Rank

	Number	Percent
1st (n=27) 2nd (n=15) 3rd (n=15)		
Top 10% (includes 1st, 2nd, 3rd)	217	12.4%
Top Quarter (includes top 10%)	623	35.6%
Second Quarter	659	37.7%
Third Quarter	370	21.2%
Bottom Quarter	96	5.5%
Average Class Rank		63

ACT Scores

	Number	Percent
Top Quarter (24-36 Comp)	521	31.9%
Second Quarter (21-23 Comp)	480	29.4%
Third Quarter (17-20 Comp)	525	32.1%
Bottom Quarter (1-16 Comp)	107	6.6%
Average ACT Composite		22