

MONTHLY UPDATE

JULY 2021



DIRECTOR'S NOTE

This month, Idaho Policy Institute launched a number of new projects while wrapping up a few others. With the fall semester approaching, we are preparing to welcome students back to campus, including those in the MPA Capstone and Housing Opportunities for All VIP courses. Over the summer, instructors have been working with community partners to develop course projects responsive to the needs of Idaho jurisdictions, agencies, and nonprofit organizations.

IPI's engaged research continues to help decision makers use evidence to improve programs and policies. Our work on housing drew quite a bit of attention this month with a number of mentions in the media and interviews regarding our research on housing issues. Much of the press was associated with the Second Annual Evaluation of New Path Community Housing and work analyzing evictions in Idaho. With the housing crisis continuing to mount, IPI anticipates conducting more research on this important issue both internally and for decision makers across the state.

Best of luck to all preparing for the coming semester.

Enjoy these last few weeks of summer!

BEST,

DR. VANESSA CROSSGROVE FRY

PROJECT LIST

PROPOSAL STAGE

- Advancement of Idaho Women Attorneys (sponsor, Idaho Women Lawyers)
- Impact of the COVID-19 Pandemic on Idahoans (sponsor, United Way of the Treasure Valley)
- Recovery, Renewal and Resilience in a Post-Pandemic World (Trans-Atlantic Platform for Social Sciences and Humanities)
- Water System Infrastructure Needs Survey (sponsor, Idaho Department of Environmental Quality)
- West Central Mountains Creative District Network Analysis and Evaluation (sponsor, Idaho Commission on the Arts)

PENDING

- Idaho Outdoor Recreation Survey (sponsor, Idaho Department of Parks and Recreation)
- Modeling Resilience Through a Community Lens: Discovering Data, Creating Tools, and Connecting People Who Make Resilience Possible (sponsor, National Science Foundation)
- Prevalence and Probability of Youth Homelessness (sponsor, U.S. Housing and Urban Development)
- COVID-19 Travel Behavior Study (sponsor, Valley Regional Transit)
- Educational Programming Attitudinal Awareness Survey (sponsor, Idaho Public Television)

ONGOING SPONSORED

- A Foundation for Research into Webcams as Tools in Informal STEM Learning (sponsor, National Science Foundation)
- Communities of Excellence Charter School Program Evaluation (sponsor, Bluum)
- Connected Canyon County (sponsor, Valley Regional Transit)
- Department of Motor Vehicle Service Delivery Analysis (sponsor, Idaho Transportation Department)
- Guardian Ad Litem Program Evaluation (sponsor, Idaho Supreme Court)
- Public Opinion Survey (sponsor, Ada County Highway District)
- SAMHSA Treatment and Transitions Evaluation (sponsor, Idaho Health and Welfare)
- Statewide Permanent Supportive Housing Assessment (sponsor, Idaho Housing and Finance)
- Streamflow Data and Climate Vulnerability Survey (sponsor, Northwest Climate Adaptation Science Center)

ONGOING UNSPONSORED

- Boise State's COVID-19 Dashboard
- City Go Annual Awareness Survey
- Rural Industry Cluster Needs Assessment
- Policy Brief: Responses of Municipal Governments to the COVID-19 Pandemic
- Data Collection for a Full-Length Paper: Municipal COVID-19 Responses by Government Form

ENDING

- Engaging Idaho's Out of School Youth (sponsor, Idaho Workforce Development Council)
- Master of Environmental Management Needs Assessment (multiple sponsors)
- New Path Community Housing Evaluation (sponsor, City of Boise)



PROJECT SPOTLIGHT

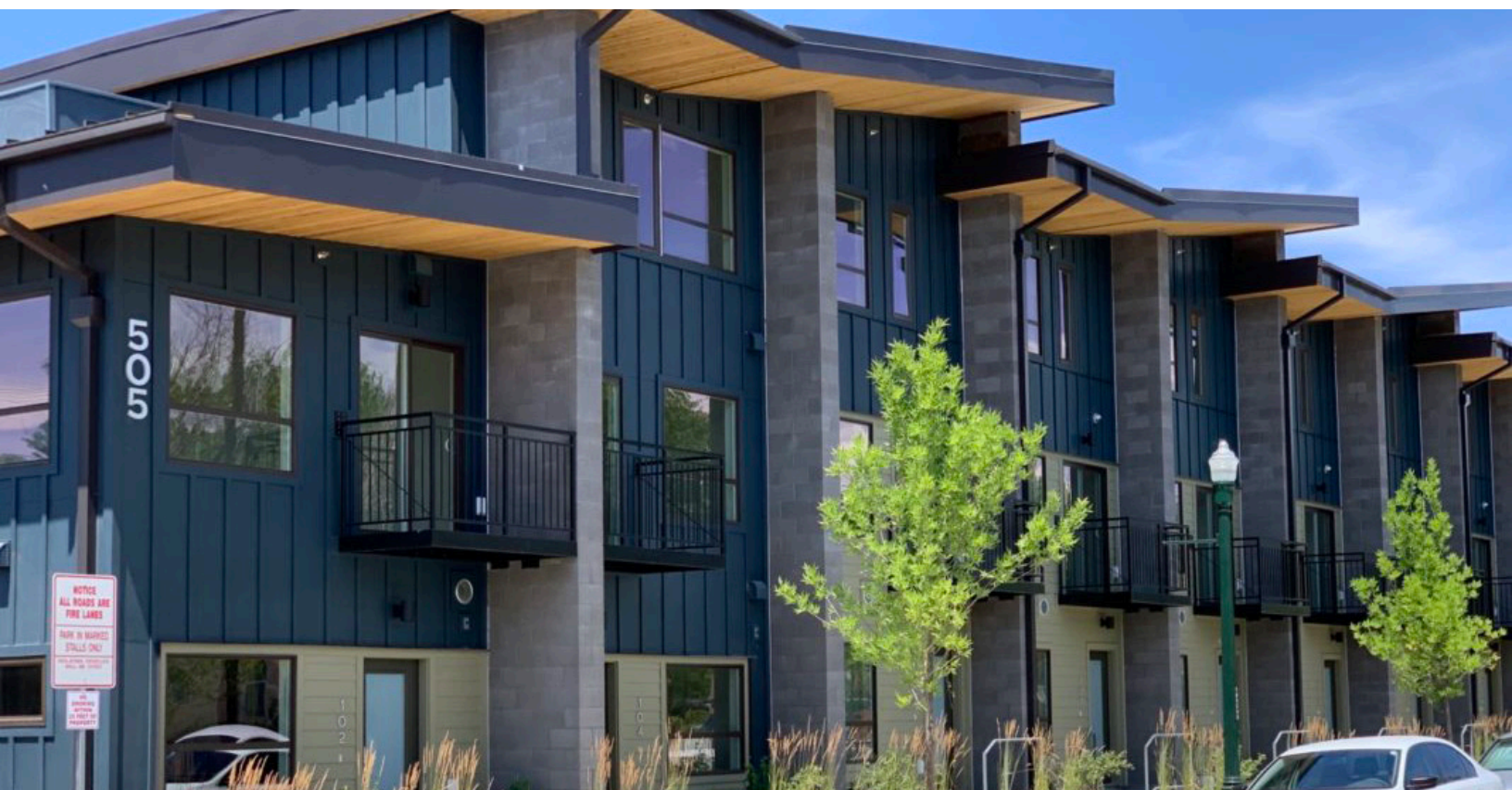
TREATMENT AND TRANSITIONS PROGRAM EVALUATION

Team: Vanessa Fry, Lantz McGinnis-Brown, Ben Larsen

The Idaho Department of Health and Welfare's (IDHW) Treatment and Transitions (TNT) Program serves individuals with severe mental illness and/or a co-occurring disorder who are experiencing homelessness or housing instability. The project is funded by the Substance Abuse and Mental Health Services Administration (SAMHSA) within the U.S. Department of Health and Human Services. As the ongoing project evaluator, Idaho Policy Institute oversees all evaluation activities and works closely with IDHW program staff to design data collection strategies, monitoring, and reporting for this program. In July, IPI completed the Year 3 Quarter 2 evaluation report.

Three enhanced safe and sober houses (ESSH) were operating during Year 3 Quarter 2. Two houses serve more urban populations, with one located in Boise serving female participants and the other in Idaho Falls serving male participants. The third house, in Caldwell, provides access to a more rural population and male participants. All houses are operating at or near capacity with a total of 58 participants currently housed.

Within the first two years of the program, the three enhanced safe and sober houses operated at full or near capacity with consistent participation rates. The program exceeded the goal of serving 37 participants in year two with 80 participants enrolled throughout the year. Already in year three, the program has served 90 participants. In total, the program has now served 133 Idahoans. Graduation rates from the houses continue to be consistent and referral rates are steady overall.



PROJECT UPDATES

EMERGENCY SHELTER RESEARCH

Anaïse Boucher-Browning, Aisha Kayed, McAllister Hall, Vanessa Fry

The City of Boise created the Shelter Better Task Force with the goal to produce a recommendation for the City's approach to emergency shelters, siting those shelters, and providing services for those experiencing homelessness. The City requested IPI create a report for the Task Force to increase their understanding of how different communities have successfully created emergency shelters effectively and collaboratively. IPI is using Boise peer cities to guide research. The final product will include case studies from different cities as well as common themes from literature.

DIVISION OF MOTOR VEHICLES SERVICE DELIVERY MODEL

Gabe Osterhout, Matthew May, Vanessa Fry, Cheong Kim, Emily Pape

Since kicking off the project last month, the team has conducted research on several project tasks. During July, researchers examined other state DMV systems, reviewed data from surveys conducted between 2017 and 2021, and initiated a thorough review of similar studies. Notably, IPI collected and analyzed county-level data detailing population size, registered vehicles, licensed drivers, DMV offices and agents, transactions, and other relevant statistics for all 44 Idaho counties. Two members of the project team also attended the Idaho Transportation Department's July County Engagement Team meeting with representatives from county assessor and sheriff offices. Research will now focus on developing and distributing a national survey of state DMV leaders.

PERMANENT SUPPORTIVE HOUSING COMPARATIVE ANALYSIS

Ben Larsen, McAllister Hall, Cheong Kim, Vanessa Fry

Idaho Housing and Finance Association (IHFA) has partnered with IPI to conduct an analysis of single-site versus scattered-site permanent supportive housing programs (PSH). PSH provides stable housing and support services to residents formerly experiencing homelessness. Data analysis is complete and the final report will be ready in mid-August.

RURAL INDUSTRY CLUSTERS NEEDS ASSESSMENT

McAllister Hall, Ben Larsen, Aisha Kayed, Vanessa Fry

IPI has engaged in a survey of high school students and interviews with industry leaders in the dairy industry of Southern Idaho and the energy and cybersecurity industries of Eastern Idaho. The results will identify workforce gaps and inform future programming at Idaho institutions of higher education. Data collection was completed in July and the team is now beginning data analysis.



MONTH IN REVIEW

IPI RESEARCHERS PARTICIPATE IN HOUSING SOLUTIONS SUMMIT

IPI Interim Director Vanessa Fry and Research Associate Ben Larsen joined Amy Appleton, Eddie Campagnola, Colin DeForrest, Barb Oliver, and Marcella Wilson in a panel discussion about preventing and addressing homelessness. Moderated by Bill Barberg, the panel discussion was part of the ongoing Housing Solutions Summit organized by Insight Information.

NEWS

[“Has Boise’s New Path program ‘failed’? Here’s why Ada County wants to defund it”](#) Idaho Statesman, July 06, 2021

[“BSU: Housing for chronically homeless saves community \\$2.66 million”](#) Idaho Press, July 21, 2021

[“New Path Community Housing Annual Evaluation Details Community Benefits of Housing First Model in Ada County”](#) City of Boise, July 22, 2021

[“Annual evaluation of New Path shows success”](#) KIVI, July 22, 2021

[“How the remote work revolution could add fuel to the Treasure Valley’s population growth”](#) Idaho Press, July 26, 2021

[“Nowhere to go: Forced-out Boise tenants dive into desperate search for housing”](#) Idaho Statesman, July 25, 2021

[“Ada County Commissioners, New Path agencies discuss future of program”](#) Idaho News 6, July 26, 2021

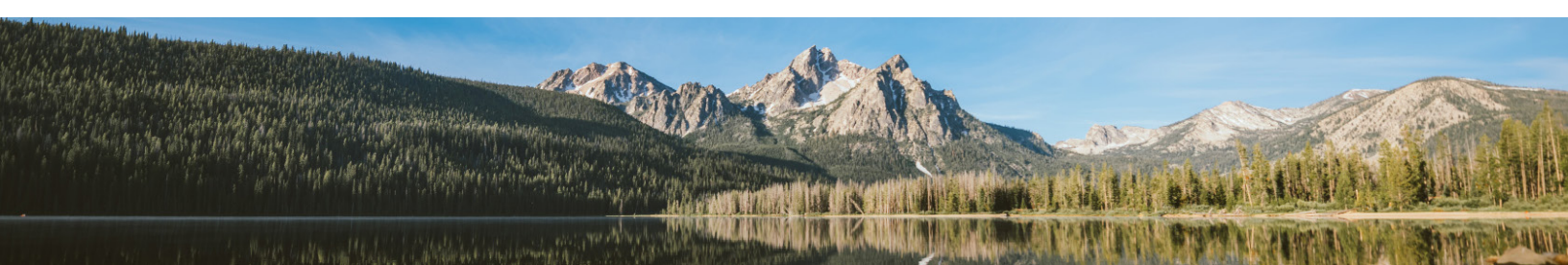
[“Millions of renters face eviction and homelessness: 3 essential reads about the CDC’s expiring moratorium”](#) The Conversation, July 28, 2021

[“Eviction rates in Idaho about equal to what they were before the pandemic”](#) Idaho News 6, July 30, 2021

OTHER

Cheong Kim attended a statistical training course, titled “Multilevel and Mixed Models Using Stata,” held virtually by Statistical Horizons, July 13 - 16, 2021.

Lantz McGinnis-Brown came back to work after paternity leave this month! We’re glad he was able to take the time to be with his new baby, but we are also glad to have him back!



GET IN TOUCH



ipi@boisestate.edu



(208) 426-5488



@idaho_policy



boisestate.edu/sps-ipi/