



# VIEWBOOK

## SCHOOL OF PUBLIC SERVICE



**BOISE STATE UNIVERSITY**

**SCHOOL OF PUBLIC SERVICE**



## Mission

Staff and students make important contributions that balance theory and practice across diverse areas of contemporary scholarship, including the following:

- Democratic and Collaborative Governance in the New American West
- Policy Analysis
- Systems of Law and Justice
- Sustainability
- Regional Planning and Development

## Vision

The vision of the School of Public Service is to:

- Empower students to become innovative and responsive public service leaders within local, state, national, and global communities.
- Achieve national and international recognition for relevant theoretical and applied research.
- Promote and facilitate informed discourse and civic engagement across diverse groups.
- Serve as a recognized and trusted resource for policymakers searching for effective solutions to pressing public concerns.

## Values

The characteristics of how we do our work in the School of Public Service include:

- Transparency
- Respect and Civility
- Community Engagement
- Collaborative Partnerships
- Creativity and Innovation
- Integrity

# What's Inside

<b>Our Mission, Vision and Values .....</b>	<b>2</b>
<b>Majors, Minors &amp; Certificates.....</b>	<b>5</b>
<b>From Interim Dean Andrew Giacomazzi .....</b>	<b>6</b>
<b>Academic Programs</b>	
Conflict Management.....	10
Criminal Justice.....	12
Environmental Studies .....	14
Global Studies.....	16
LEAD Program.....	18
Military Science .....	20
Political Science .....	22
Public Policy and Administration, MPA.....	24
Public Policy and Administration, PhD.....	26
Urban Studies and Community Development .....	28
<b>Centers and Institutes</b>	
Idaho Policy Institute .....	32
Andrus Center for Public Policy .....	34
Frank Church Institute .....	36
Energy Policy Institute .....	38
NEW Leadership Idaho .....	40
The Blue Review .....	42
Strategic Initiatives .....	44
<b>Giving to the School of Public Service .....</b>	<b>46</b>







# Majors, Minors & Certificates

## **Conflict Management**

- Graduate Certificate
- Conflict Management Certificate

## **Criminal Justice**

- Master of Arts
- Bachelor of Science
- Criminal Justice Minor

## **Environmental Studies**

- Bachelor of Arts
- Minor in Environmental Studies

## **Global Studies**

- Bachelor of Arts
- Minor in Global Studies

## **LEAD Program**

- Certificate in Leadership and Human Relations
- Certificate in Applied Leadership

## **Military Science/ROTC**

- Military Science Minor

## **Public Policy and Administration**

- Master of Public Administration
- Doctor of Philosophy of Public Administration

## **Political Science**

- Master of Arts
- Bachelor of Science in Political Science with emphasis in:
  - American Government and Public Policy
  - International Relations and Comparative Politics
  - Public Law and Political Philosophy
- Political Communication Minor
- Political Science Minor
- Canadian Studies Minor
- Political Science, Social Science, Secondary Education

## **Urban Studies and Community Development**

- Bachelor of Arts
- Minor in Urban Studies and Community Development

# From Interim Dean Andrew Giacomazzi



Boise State University's School of Public Service is dedicated to solving problems. Through our academic programs, we work diligently to teach our students the skills they need to make a positive impact in our local communities, across Idaho, and beyond. In addition to ensuring that our students become experts in their chosen disciplines, we educate them to become responsive and innovative leaders.

All of our undergraduate and graduate academic degree programs - as well as numerous minors and certificate programs - have a public service component. We believe that by combining classroom studies with practical, hands-on learning experiences will serve our graduates well as they become future leaders.

We endeavor to be a resource for decision-makers through our institutes, surveys, and cutting edge scholarship. With this in mind, the mission of the School is supported by a variety of centers and institutes designed to help inform public debates and facilitate civility and dialogue.

The School of Public Service also conducts surveys across the city, state and region to help leaders make informed decisions. These include the Idaho Public Policy Survey and The Treasure Valley Community Survey.

Our students benefit from several scholarships including:

- **The Andrus Scholars program**, which was launched in 2019 to support our future environment and public lands leaders through meaningful work experience and skill development.
- **Frank Church Scholarships and Internships**, which are awarded to Boise State students with a demonstrated potential for public service. Awards may be for scholarships on campus, in Washington, D.C. or abroad.

Thank you for reading our Viewbook. We look forward to finding ways to work together in service to our communities.

*Andy Giacomazzi, Interim Dean of the School of Public Service*













# Programs







# Conflict Management



## What is Conflict Management?

Our Conflict Management program offers two academic certificate programs for students interested in improving their ability to effectively manage conflict with others.

The **graduate-level certificate program** focuses on developing knowledge and skills in interpersonal conflict management, group and intercultural conflict management, negotiation, and mediation. It prepares students to be confident, capable, and resilient leaders through the challenges in their professional and personal lives by engaging students in innovative, experiential, and supported learning environments that are founded on self-discovery, our common humanity, and critical inquiry into civil discourse and collaborative engagement across diverse groups and perspectives.

The **undergraduate-level certificate program** integrates skill development in areas such as conflict management, negotiation and mediation with relevant theory and research.





**Criminal Justice**





## What is Criminal Justice?

The Boise State Criminal Justice Program offers high quality education to those seeking careers within within local, state, and national agencies working in the areas of crime and victimization. Given the comprehensive orientation of Boise State, our educational focus is to prepare students to be fully informed participants at all levels of the criminal justice field and all aspects of justice in public, private, and non-profit agencies.

Courses are offered at Boise State's main campus as well as a variety of classes at campuses in Twin Falls and at Gowen Field. Many courses are offered in evening and weekend formats.

The AfterWork program allows Criminal Justice undergraduate students to earn a degree entirely in the evenings, on weekends, and online.

Criminal Justice degrees offered at Boise State include:

- Master of Arts
- Bachelor of Science
- Criminal Justice Minor



### ON CAREERS

#### *Potential careers include:*

Victim Services Professional

Police Officer

Probation and Parole Officer

Correctional Officer

Offender Rehabilitation Specialist

Crime Analyst

Fraud investigator

US Marshal

## What can I do with this degree?

- Local, state, and federal government careers including law enforcement officer, probation/parole officer, and victim/witness coordinator.
- Private sector and non-profit careers including insurance fraud investigator, addictions counselor, and crime victim advocate.

## What kind of real-world experience will I receive?

Both field work and internships are actively encouraged.

[boisestate.edu/sps-criminaljustice](https://boisestate.edu/sps-criminaljustice)



# Environmental Studies



## What is Environmental Studies?

The Bachelor of Arts degree in Environmental Studies is an interdisciplinary liberal arts degree that provides students with a solid background in the natural, physical and social sciences, emphasizing communication, critical thinking, and problem solving. It allows students to take classes from academic programs across campus. The Environmental Studies major is unique in that it provides its majors with an unparalleled level of flexibility to design an area/areas of emphasis that meet their own individual academic and career goals and interests.

## What can I do with this degree?

The Environmental Studies degree provides excellent preparation for:

- Jobs with environmental organizations, governmental agencies, and industry
- Law school
- Graduate programs in public policy, social sciences and the humanities

## What kind of real-world experience will I receive?

### Internships

Environmental Studies includes a required internship experience. Past internships have included: Idaho Department of Environmental Quality, Bogus Basin Snow School, Idaho Department of Fish and Game, BLM, Snake River Alliance, Zoo Boise and Idaho Smart Growth.

### Capstone Project

All capstone projects have an external sponsor and culminate with a poster presentation at the Undergraduate Research Conference at Boise State. Many students conduct internships with their sponsoring agency.



### ON CAREERS

#### *Potential employers include:*

Bureau of Land Management  
Idaho Department of Lands  
Idaho Power  
Intermountain Gas

U.S. National Park Service  
U.S. Forest Service  
U.S. Dept. of Agriculture  
Trout Unlimited

[boisestate.edu/sps-environmental](https://boisestate.edu/sps-environmental)





**Global Studies**



## What is Global Studies?

- Boise State's Global Studies program offers a balanced core of courses in the humanities and social sciences. A Global Studies degree prepares students for graduate programs in numerous fields.

## What can I do with this degree?

- A Global Studies major prepares students to work in any field such as international business, law, government and non-governmental service, social services, natural sciences, health fields and education.
- Global Studies fosters the development of skills that are highly prized in the global workforce, such as cross-cultural sensitivity, analysis of historical context, and ability to work in multiple languages.

## What kind of real-world experience will I receive?

Service learning, study abroad, and internships open paths to careers. Learning a world language is an integral component of this degree program.

## Design Your Degree

The Global Studies degree allows students to structure their own distinctive global learning experience by choosing from options within the following program components:

- World Language**
- Area of Emphasis**
- Regional Focus**
- Experiential**

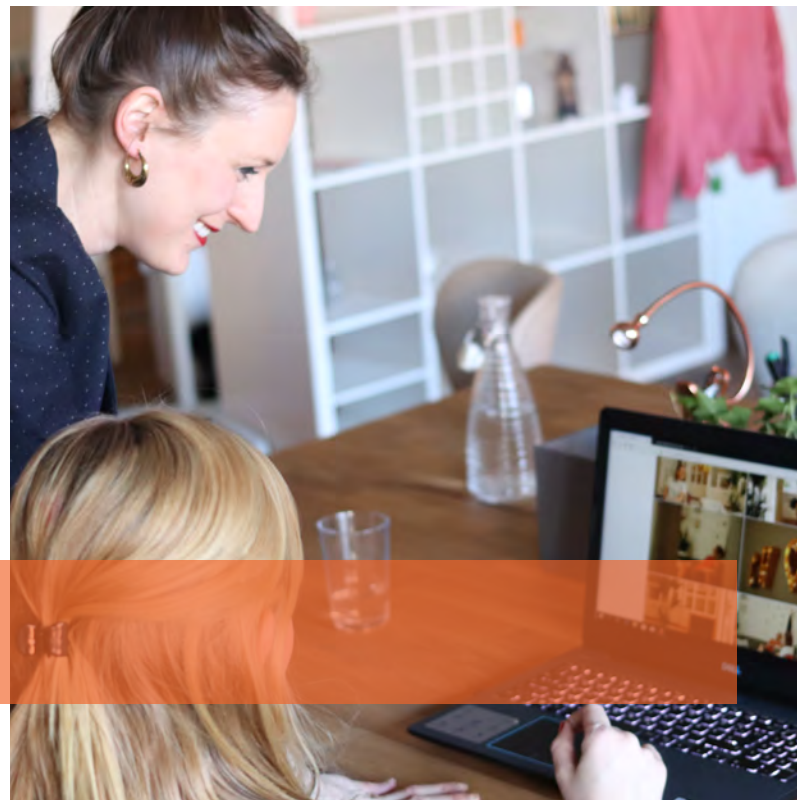


## ON CAREERS

### *Potential careers include:*

Attorney  
Cultural Anthropologist  
Foreign Service Officer  
Geographer  
Humanitarian Relief  
Import/Export Agent  
International Trade  
Interpreter  
Museum and Cultural Arts  
Travel and Tourism  
United Nations Officer  
World Health Organization Officer





**LEAD Program**

## What is the LEAD Program?

The LEAD certificates help students learn to work effectively with others and solve problems while making a difference in their community. Two certificates are offered. They are open to all majors. Students can choose between fully online or in-person options.

### **Certificate in Leadership and Human Relations**

The Certificate in Leadership and Human Relations is an on-campus, 16-credit program designed for students who are interested in dynamic experiences and projects that allow them to practice new leadership skills and gain immediate feedback from a supportive community of faculty and peers. Integrating the fields of leadership and personal development, the certificate program approaches leadership as a personal and relational process. Regardless of academic major, students will be primed to be high-integrity change agents in their discipline and in the world.

### **Certificate in Applied Leadership: Growing into a High-Impact Leader**

Growing into a High-Impact Leader is a fully online, 12-credit program designed for non-traditional students or working adults who want to augment their current professional and leadership skills. Each course is packed with perspectives and activities students can immediately put to use where they work and live. The primary focus of this program is “you,” and is best suited for students interested in self-reflection and professional growth. Regardless of academic major, individuals will gain deep insight into the challenges facing today’s leaders, will hone their own leadership style to address these challenges, and will connect with like-minded people.





**Military Science**

## What is Military Science?

Military Science/Army ROTC is a minor within the School of Public Service.

Boise State Army ROTC trains young men and women to serve their country as officers and leaders in their community, subsequent professions, and in the United States Army. Students will have a normal college experience, but graduate as an Officer in the US Army with either a full-time or part-time job.

Along with leadership and management training, Army ROTC offers scholarships and benefits.

## What can I do with this minor?

Reserve Officers' Training Corps' "Bronco Battalion" at Boise State University and partnership schools have made a significant contribution to the nation. A large number of dedicated officers have served their country with distinction. Many of the officers have chosen military services for their careers.

## Learning by doing

The curriculum is a combination of classroom instruction of basic leadership, management, oral & written communication skills; physical training, counseling, map reading and tactics with hands-on laboratory participation both indoors and outdoors. ROTC activities including building rope bridges, conducting land navigation exercises, rappelling, paint ball battles, first aid training, and studying basic soldier tactics. Students take one ROTC class per semester and participate in a physical fitness class and lab exercises.



### ON SCHOLARSHIPS

**ROTC scholarships fall into several categories:**

- **Guaranteed Reserve Forces Duty (GRFD) scholarships**
- **National High School scholarships**
- **Campus-based scholarships**

**[boisestate.edu/sps-militaryscience](https://boisestate.edu/sps-militaryscience)**





**Political Science**

## What is Political Science?

A Master of Arts degree in Political Science allows students to deepen their knowledge of American, comparative, and international politics

Our Bachelor of Political Science degree offers three areas of emphasis:

- American Government and Public Policy
- International Relations and Comparative Politics
- Public Law and Political Philosophy

There is also a degree in Political Science, Social Science, Secondary Education.

There are three Political Science minors:

- Canadian Studies
- Political Communication
- Political Science (for non-majors)

## What can I do with this degree?

Political Science majors develop skills valued in a wide variety of careers. Students master analytical thinking, written and oral communication, logical reasoning and research skills, gathering and interpreting data, as well as quantitative methods which will make them versatile across occupations.

Political Science prepares majors for further study at the graduate level, and many students become teachers or lawyers. Others work for large corporations as public affairs officers or for federal, state, or local governments in numerous capacities. Some become reporters, lobbyists, or campaign managers; some have been elected to public office.

## What kind of real-world experience will I receive?

Political Science students have internship opportunities in Idaho, Washington DC, across the US and internationally. Internship opportunities can be found at: [sps.boisestate.edu/politicalscience/internships/](https://sps.boisestate.edu/politicalscience/internships/).



### ON CAREERS

*Potential careers include:*

Attorney  
Campaign Manager  
Intelligence Analyst  
Journalist  
Legislative Staff  
Policy Analyst  
Political Consultant  
Public Relations  
Researcher





**Public Policy & Administration, MPA**

## What is Public Policy and Administration?

The Master of Public Administration (MPA) is the most widely recognized educational degree focused on public and nonprofit management. The Master of Public Policy and Administration degree reflects the nature of the discipline of public administration, a mixture of theory and practice.

In addition, we offer five graduate certificates:

- The **Nonprofit Administration** Certificate draws upon interdisciplinary coursework to assist working professionals and students hone management and leadership skills and policy development expertise.
- The Certificate in **Applied Public Administration** assists working professional and students hone their management and leadership skills and policy development expertise in the unique environment facing public service organizations.
- The Certificate in **Environmental Governance** assists working professionals and students within the context of the unique challenges that emerge for public, private, and non-profit sectors in governing the environment.
- The Certificate in **State, Local, and Regional Governance** assists working professionals and students within the context of the unique governance challenges that emerge for public, private, and non-profit sectors at state-, local-, and regional-levels.
- The Certificate in **Policy Research** assists working professionals and students with additional training and coursework to further develop their expertise and skills for research within the context of public policy formulation, analysis, and evaluation.



### ON CAREERS

#### *Potential careers include:*

Agency Management  
City Management  
Consultant  
Director of Operations  
Dispute Resolution  
Legislative Staff  
Nonprofit Director  
Policy Analyst  
Researcher

## What can I do with an MPA?

MPA graduates serve in all levels of government in a variety of administrative, research, and policy positions.

## What kind of real-world experience will I receive?

The MPA program features hands-on projects that address real-world issues.

[boisestate.edu/sps-publicpolicy/mpa](https://boisestate.edu/sps-publicpolicy/mpa)





**Public Policy & Administration, Ph.D.**

## Prepared | Practical | Applied

The Public Policy and Administration Ph.D. program in the School of Public Service prepares students for senior level positions as managers and policy analysts in public and non-profit organizations at the state, national, and international level.

### Prepared

The PPA Ph.D. program provides extensive, rigorous training in policy analysis. Graduates will take courses in public administration, the policy process, methods, and research design, and will write dissertations that prepare them to apply theory to real-world environments.

### Practical

Our PPA Ph.D. is ideal for both traditional students and for working professionals. Classes are often held in the evenings, and small class sizes ensure one-on-one attention from faculty.

Our faculty work closely with students as they navigate coursework, comprehensive exams, and the dissertation writing process.

### Applied

The majority of our students are enrolled part-time and already work in policy and public administration positions. Similarly, our faculty are engaged in research and outreach with policymakers and public administrators. Cohorts of students and faculty thus bring a wide range of professional experience and applied policy and administration knowledge with them to class, and both serve as valuable professional resources for future graduates.



### ON ASSISTANTSHIPS AND SCHOLARSHIPS

The Ph.D. program offers full-time students the opportunity to apply for Graduate Assistantships (GAs). GAs receive tuition waivers and stipends for part-time work completed with a faculty advisor. These competitive assistantships provide an excellent opportunity for students to become part of the PPA research culture at Boise State.

Scholarships are also available to interested applicants.





# Urban Studies & Community Development

## What is Urban Studies and Community Development?

- Urban Studies and Community Development relates the past to the future of cities. It explores their politics and economics, and environmental and cultural trends. Multidisciplinary and experiential, it builds applied skills highly prized in urban and community development professions through teaching, engagement and research.
- Urban Studies graduates are trained as urban analysts who combine strong communication and analytical skills with deep, applied knowledge about how cities, communities, and regions function.

## What can I do with this degree?

- Urban Studies students work in government, law, business, conservation, advocacy and urban planning. We also nurture a life-long passion for civic engagement.

## What kind of real-world experience will I receive?

- Urban Studies builds on experiential learning from the first to the last class through service-learning projects, internships, Investigate Boise and the culminating professional Capstone project.
- Urban Studies uses Boise, a booming mid-sized city, to illustrate metropolitan and global trends.



### ON CAREERS

#### *Potential careers include:*

City Council administrator

Director of Development

Economic Development

Federal Reserve Bank

Grant Manager

Mayor's Office

Program Manager

Rural Development Manager

Sustainability Coordinator

Urban Planner













**Idaho Policy Institute**

The strength of Idaho's economy and communities depends on leaders and elected officials having the tools needed to make informed decisions. Effective policy development and implementation also depends on independent and objective research, rigorous analysis, and robust discussion.

The Idaho Policy Institute (IPI) leverages the expertise and existing resources of Boise State University to facilitate exactly this, helping state and local leaders develop innovative solutions to pressing challenges.

As an independent source of research and analysis for decision-makers throughout Idaho, the Institute utilizes economic impact studies, demographic research, and implementation of high quality opinion surveys to stimulate constructive discussions about innovative solutions to community concerns among the public, private and nonprofit sectors. IPI also serves as a resource to connect organizations with any number of experts in a variety of disciplines across the School of Public Service and the University.



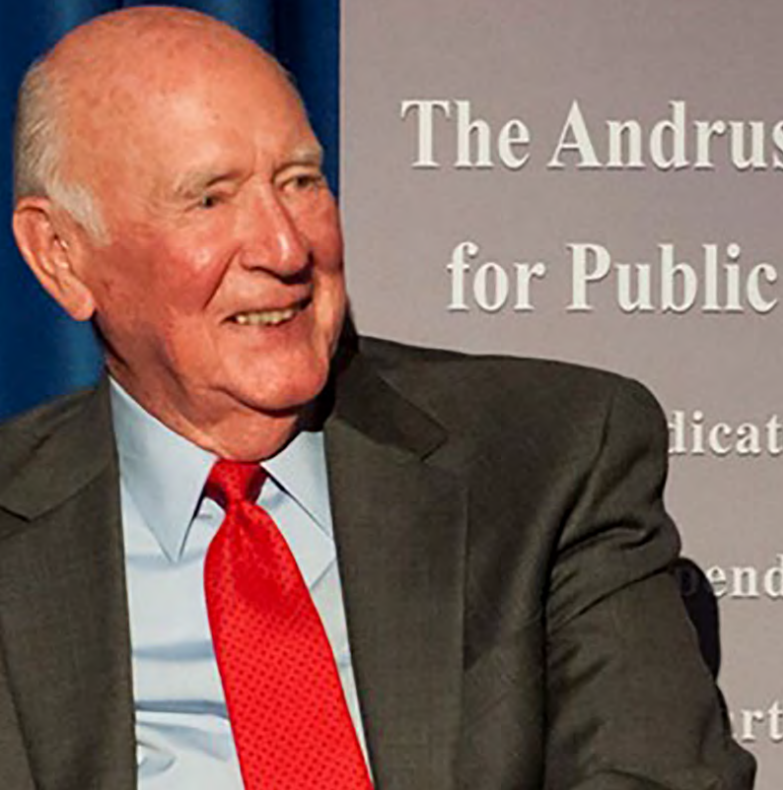
## ON OUR WORK - STRENGTHENING COMMUNITY

The Idaho Policy Institute is more than a research center. IPI projects focus on strengthening community and providing assistance to business, government and nonprofit agencies across the state.

Past projects include an economic development partnership with Idaho National Laboratory and the City of Arco that provided leadership training for startup businesses in Butte County, a tourism and marketing component to build a website promoting Arco's regional assets, and assistance in integrating art into the city's beautification efforts.

Whether assisting the Eagle Fire Department in exploring a fire protection partnership, the Department of Health and Welfare in developing a lead risk index, or the City of Post Falls in establishing a way to budget for future growth, IPI works with communities to collect the data needed to make informed decisions.





**Andrus Center For Public Policy**

## About the Center

The Andrus Center for Public Policy advances the legacy issues of the late Idaho Governor and Secretary of the Interior, Cecil D. Andrus.

## Our Areas of Focus

**Environment and Public Lands** - Wise use of our public lands and collaborative land-use decisions through stakeholder inclusive conversations.

**Education** - The Andrus Center is a champion of public education.

**Leadership** - The Women and Leadership Conference is an annual conference highlighting women leaders. Welcoming both women and men, the conference combines keynote presentations from accomplished women leaders in a variety of fields, skills-based training sessions that focus on professional development, and morning and evening reception events that enable attendees to connect with their peers and develop their personal networks.



### ON OUR WORK - ANDRUS SCHOLARS

The Andrus Scholars program was launched in 2019 to support our future environment and public lands leaders through meaningful work experience and skill development.

Scholars are selected via a competitive application process and placed in sponsored internships with federal, state, nonprofit, or other mission-centered business enterprises that provide students with meaningful work experience. Their experience enhances learning and skill development, assists in post-graduation job placement, and ultimately supports the development of the environmental and public lands stewards of tomorrow.

Andrus Scholars receive \$6,000 to help pay for internship credit hours, provide the equivalent to a living wage for hours worked, and cover any internship-related travel and expenses.

[boisestate.edu/sps-andruscenter](https://boisestate.edu/sps-andruscenter)





# Frank Church Institute

*Photo: Boise State University Library,  
Special Collections and Archives*

## About the Institute

No individual has touched the nation, Idaho or Boise State University quite in the same manner as Frank Church. Church served his native state for 24 years in the U.S. Senate, creating a legacy of unequaled public service. The Frank Church Institute was established in 1982 to honor the achievements and to carry forward the principles of one of Idaho's most distinguished native sons, Senator Frank Church.

The Institute emphasizes to its students those ideas which the Senator held dear—a strong belief in the rule of law, eloquence firmly based on reason, and an unwavering faith in the American political system.

The Institute's mission is to "promote civic engagement and understanding of public policy with focus on foreign relations." The Institute is non-partisan, but it seeks to "provide a forum for open and informed discussion characterized by civility, tolerance, and compromise." The Institute seeks to fulfill its mission through the sponsorship of the annual Frank Church Conference, the Frank and Bethine Church Chair of Public Affairs, and the Frank Church Scholarships at Boise State University.

## Model United Nations

Model UN is for those interested in learning more about how the UN operates. Students worldwide take part every year at all educational levels. Many of today's leaders in law, government, business and the arts – including at the UN itself – participated in Model UN as student. Boise State MUN members attend a conference in New York, where they use their knowledge and skills gained in a Model UN class at Boise State. Delegates will be prepared to resolve several current international issues pending in UN committees.

## Frank Church Scholarships and Internships

Frank Church Scholarships and Internships are awarded to Boise State students with a demonstrated potential for public service. Awards may be for scholarships on campus, in Washington, D.C. or abroad.



### ON OUR WORK - THE FRANK CHURCH CONFERENCE

The Frank Church Institute sponsors annual conferences on important issues of the day. Conference subjects have included:

- 2020: How Do Democracies Survive and Thrive in the 21st Century?
- 2019: Democracy in an Age of Anxiety
- 2018: Global Struggle for Democracy

**[boisestate.edu/sps-frankchurchinstitute](https://boisestate.edu/sps-frankchurchinstitute)**





**Energy Policy Institute**

## About the Institute

The Energy Policy Institute is dedicated to advancing energy policy and decision-making through an evidenced-based approach that is grounded in social and technical understanding of energy systems change. From clean and secure energy to resilient and affordable energy systems, EPI's focus is on interdisciplinary research, advising, collaborative engagement, and training. EPI's cross-cutting approach leverages strengths in policy, science, engineering, management and economics.

EPI focuses on policy-relevant challenges and opportunities in energy, through research, advising, convening, neutral facilitation, testimony preparation and training, aiming to enhance how energy is approached and utilized through work on social, technical, and economic aspects with policymaker, students, communities, and members of industry.

EPI employs a multi-disciplinary and evidence-based approach to energy transitions, informing public and private sectors in the west and beyond. As the policy body of the Center for Advanced Energy Studies (CAES), EPI leverages the expertise of a team and collaborators to foster innovation for future energy systems.







**NEW Leadership Idaho**

National Education for Women's (NEW) Leadership Idaho is a transformational leadership program designed to prepare participants to become leaders in their communities. The program is open to undergraduates throughout Idaho and Idaho residents attending college out of state.

The six-day residential program is held on the campus of Boise State, which allows students close proximity to our state legislature. Attendees are chosen through a competitive application process and the program is limited to less than 30 participants annually.

Students have the unique opportunity to interact with and learn from many of Idaho's local and state elected officials, as well as a wide variety of community and private sector leaders. Through panels, small group discussion, and traditional classroom instruction, the women study leadership skills applicable in both public and private sector positions, the importance of understanding state and federal political systems, and respect for diversity in opinions.

NEW Leadership is a national bi-partisan program developed by the Center for American Women and Politics (CAWP). The program was designed to address the under-representation of women in American politics. Participants represent a wide range of socioeconomic, ethnic, racial and educational backgrounds, and academic majors.



## ON GOALS

The ultimate goal of NEW Leadership is to see more women running for political office. To this end, the program

- Connects students with women leaders who make a difference
- Explores the demands of effective and ethical leadership in a diverse society
- Cultivates students' leadership skills
- Enables students to practice leadership through action
- Builds a statewide network of peers and mentors





**The Blue Review**

The Blue Review promotes scholarship in the public interest. It publishes high-quality, peer-reviewed work by academics and public intellectuals with the goal of reaching and serving the broader public. We strive for independence, transparency, and collaboration and set high editorial standards. The Blue Review is a project of the Boise State University's School of Public Service, embracing the university's public affairs mission.

In 2020, the Blue Review launched two new special series:

*Coronavirus Conversations* seeks to document and reflect on the experience of the COVID-19 pandemic. The series includes articles from Boise State students, faculty, visiting academics as well as community members.

*On Racial Justice* features publications from students, faculty, and community members who seek to further our understanding of systemic racism, social injustice, and policymaking.

Like previous special series *Homelessness Colloquy* and *Perspectives on Civility*, these new series seek to take a deeper look at the important issues of the day.

## THE BLUE REVIEW



### ON OUR WORK - OUR SCHOLARSHIP

Examples of Blue Review's popular scholarship include:

*Landscapes, Wonders, and Dustups: The Federal Public Lands* John Freemuth and Mackenzie Case, Boise State

*NATO, Allies and Military Defense*  
Michael Allen, Boise State

*Don't California My Idaho?* by Jeffrey Lyons, Boise State University

*Boise's Forgotten Pandemic*  
Todd Shallat, Boise State

*John F. Kennedy: Prince of American Progressivism*  
Stephen F. Knott, Naval War College

[www.boisestate.edu/bluereview](http://www.boisestate.edu/bluereview)





# School of Public Service Strategic Initiatives

*Photo: Boise State University Library,  
44Special Collections and Archives*

## MARILYN SHULER HUMAN RIGHTS INITIATIVE

Sparked by a gift from Idaho's longtime human rights leader Marilyn Shuler, the Initiative endeavors to offer:

- An **academic certificate program** in human rights education and advocacy that will complement any academic major.
- **Open opportunities for students, faculty, staff, and community members** to learn about human rights issues.
- **Collaborative opportunities and resources** for people and groups doing human rights work on campus and in the community.

## OUR SURVEYS

The School of Public Service conducts surveys across the city, state and region to help decision-makers make informed decisions. Examples include:

- **Idaho Public Policy Survey.** The annual survey asks a statistically significant sample of Idaho adults about public policy issues of interest to researchers, the media and the public.
- **The Treasure Valley Community Survey.** The Annual Treasure Valley Survey surveys adults over the age of 18 who currently live in Ada, Canyon, Boise, Gem, and Owyhee counties. Recent surveys focused on growth in the Treasure Valley, along with the issues of transportation, housing, and taxes.

Surveys are currently being conducted for employers and utility companies across the region. Our team of researchers can customize a survey for your needs.

## GEOGRAPHIC INFORMATION SYSTEMS

Geographic Information Systems (GIS), captures, stores, analyzes, manages, and presents spatial or geographic data. The School of Public Service has hired a new professor to teach in and administer Boise State growing program, which includes new online options. This initiative allows the School to partner with other academic units to prepare Boise State students for the 21st Century workforce. And just as importantly, it will allow us to better serve Idaho by providing relevant data to decision-makers.





**OPPORTUNITIES TO GIVE TO THE  
SCHOOL OF PUBLIC SERVICE**

## FRANK CHURCH SCHOLARS PROGRAM

Scholarships and internships, within the Frank Church Institute, are open to degree-seeking Boise State University students who have demonstrated potential for leadership in public service and a commitment to their communities. Awards provide financial support for opportunities in Washington DC and abroad.

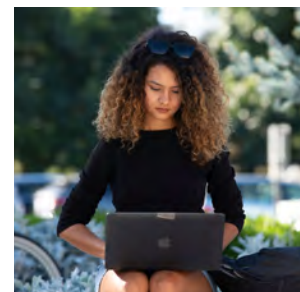
---



## ANDRUS SCHOLARS PROGRAM

The Andrus Scholars Program, in recognition of former Idaho Governor Cecil D. Andrus, provides undergraduate students with sponsored internships with federal, state, nonprofit or other businesses that provide environmentally focused students meaningful work experience such as fieldwork and job shadowing.

---



## THE EXPERIENCE FUND

The SPS Experience Fund provides resources for students to participate in opportunities that go beyond the traditional classroom practice. This game-changing initiative provides students with relevant experiences to prepare them to explore careers and to become responsible citizens and leaders in our community and beyond.

---



### For giving inquiries, please contact:

**Spencer Kelly**, Assistant to the Dean and Associate Dean  
School of Public Service  
(208) 426-1368  
[SpencerKelly@boisestate.edu](mailto:SpencerKelly@boisestate.edu)  
[sps.boisestate.edu](http://sps.boisestate.edu)



**BOISE STATE UNIVERSITY**  
**SCHOOL OF PUBLIC SERVICE**





**B**



BOISE STATE UNIVERSITY