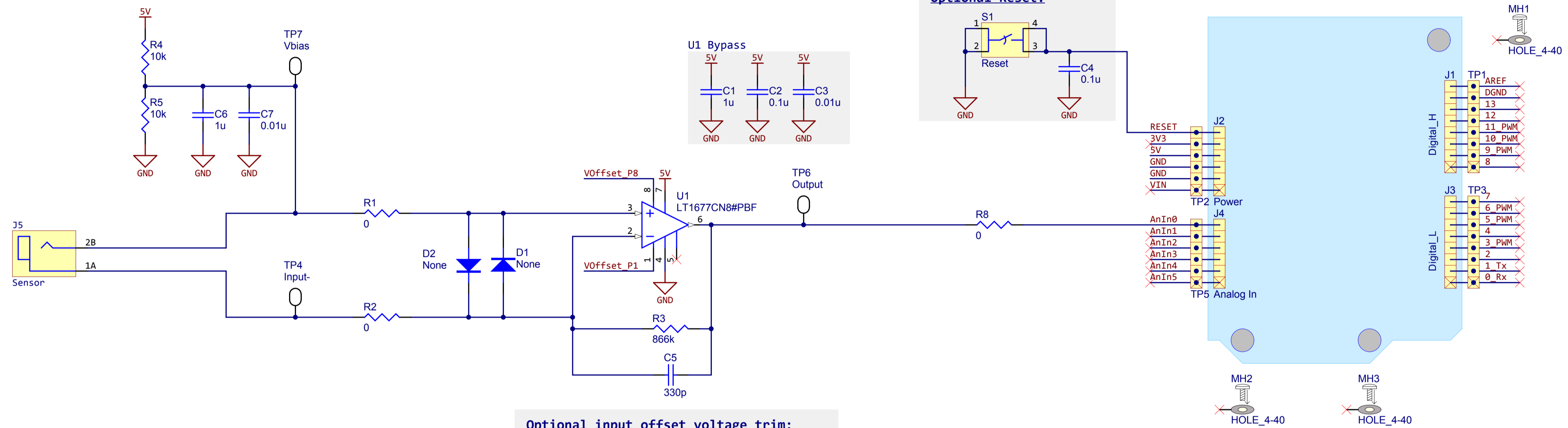


1.1



**Optional input offset voltage trim:**

Pot1 Value	R6 & R7 Value	Offset Range
10k	0	+/- 2.5mV
10k	4.7k	+/- 0.2mV

(I<sub>offadj</sub> ≈ 250nA)

**Required Additional Hardware:**

HW1  
Arduino Header Kit  
PRT-10007  
www.sparkfun.com

Alternate 6-Pin: PRT09280  
Alternate 8-Pin: PRT09279

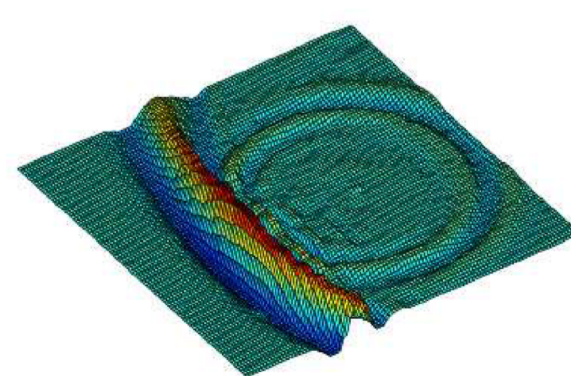
**Optional Additional Hardware:**

J6  
DIP Socket for LT1677 IC  
Millmax  
110-44-308-41-001000

**If not using specified enclosure:**

- #4-40 x 0.375" Screw Nylon
- Standoff\_M-F #4-40 x 0.5 M-FM Nylon
- #4-40 Hex Nut Nylon

Amplifier to Arduino.  
Arduino to enclosure.



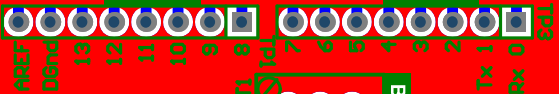
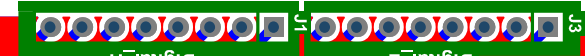
**Boise State University**

Top Layer

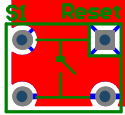
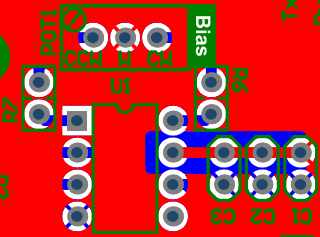
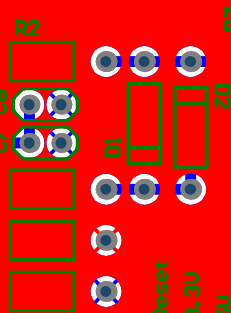
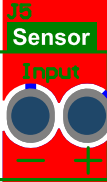
**NER**  
New England Research, Inc.

SN:

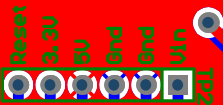
MH1



MH3



1.1  
10/15/2011  
BSO\_DAQ\_PcbDoc



MH2



