

EMERITI GUILD NEWS

Volume 9, Number 1

Winter 2018

Greetings from the Chair

I hope all members had a Merry Christmas and Happy New Year. It is the beginning of another calendar year and activities continue at the Emeriti Guild. Be sure to take advantage of all the activities and events at the Center. If you have suggestions for different activities, please let one of the Board Members know. We are always interested in new activities and locations to visit to include in the schedule of events.

Of special note is the annual meeting on February 6, 2018. We will have a special speaker, former astronaut and current Boise State University Distinguished Educator in Residence, Steve Swanson. Barbara Morgan, was scheduled to speak, but suffered a leg injury and had to cancel. Be sure to mark your calendar for this special event. There will be refreshments in addition to the speaker.

As I have noted in past messages, we need new Emeriti Guild Board Members. In February, I will be finishing my term as Board Chair and would like to step down. We need Emeriti members to volunteer for service to the Guild in order for our organization to continue as an active and vibrant group. Please consider joining the Board so that we can replace members who would like to retire. I would like to welcome Nancy Otterness and Carroll Lambert as new members of the Board.

I look forward to seeing you at the Annual Meeting.

Carol Fountain, Chair, fountain88@gmail.com

Emeriti Guild News - 1

Inside this Issue. . . .

- Message from the Chair
- Annual Meeting, February 6, 1:00 – 3:00 p.m., Stueckle Sky Center, Loft
- Book Group Reading List
- Two Board Members Added – New Board Members Needed
- Your Emeriti Benefits and Privileges
- Regular Guild Activities
- New Art Exhibit – “Brushes & Needles”
- Travel Corner – Prague, Czech Republic

Annual Meeting Scheduled for February 6, 2018

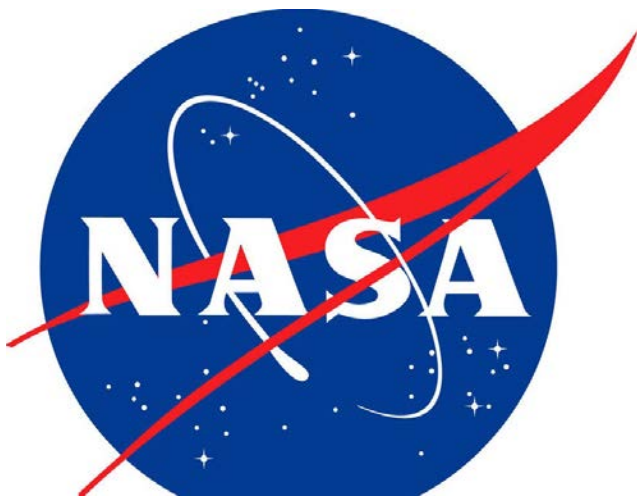
Guest Speaker Changed to Steve Swanson, Retired NASA Astronaut

The Emeriti Guild Annual Meeting will be held February 6, 2018 at 1:00 p.m. in The Loft at the Stueckle Sky Center. Parking is available in the Stadium parking lot. Be sure to display your Emeriti parking sticker. There will be individuals available to collect your Guild dues and officers will be elected. Feel free to bring a guest. Refreshments will be served.

Barbara Morgan, who was scheduled to speak, had to cancel. She has promised to speak to our group at a later time. Steve Swanson will replace her as speaker. (Continued on Page 2)

Steve Swanson, who has a Ph.D. in Computer Science from Texas A&M University, became a Distinguished Educator in Residence at Boise State University in February 2014. He graduated from Steamboat Springs High School in Steamboat Springs, Colorado; received a Bachelor of Science in Engineering Physics from the University of Colorado, and a Master of Science in Computer Systems from Florida Atlantic University before completing his doctorate.

Swanson joined NASA in 1987 as a systems engineer and a flight engineer in the Aircraft Operations Division of NASA's Johnson Space Center working on the Shuttle Training Aircraft (STA). In May of 1998, Swanson was selected as mission specialist by NASA and started training in August of 1998. During his NASA career, Swanson has completed five spacewalks totaling over 28 hours and accumulated over 195 days in space. He also has over 2800 hours of aircraft flight time. His flight experience includes two space shuttle missions (Atlantis and Discovery) in addition to a long-duration mission on the International Space Station.



Emeriti Guild Book Group Reading List for February – June 2018

Meetings are at noon on the third Wednesday of each month in the Emeriti Center. All Guild members and their guests are welcome. You do not need to attend every month, you can pick and choose the books you wish to read and discuss.

February 21: *Being Mortal: Medicine and What Matters in the End*, by Atul Gawande

March 21: *Wolf Land*, by Carter and Jenny Niemeyer

April 18: *On Trails: An Exploration*, by Robert Moore

May 16: *I Contain Multitudes: The Microbes Within Us and a Grand View of Life*, by Ed Young

June 20: *Tribe: On Homecoming and Belonging*, by Sebastian Junger

Two Board Members Added – New Board Members Needed

Nancy Otterness and Carroll Lambert have been added to the Emeriti Guild Board. Carroll was a faculty member in and retired from the College of Education, Early Childhood Education. Nancy retired from serving as faculty in the Nursing Department after 27 years of service.

We encourage anyone who is interested to volunteer to be a Board member. You may contact any Board member for information about serving. We do not meet in the summer and the time commitment is not overwhelming.



Happy
Valentine's
Day

Your Emeriti Benefits and Privileges

- BSU emeriti photo ID – available at the Student Union
- Retention of your Boise State e-mail account
- Professional parking privileges based on current parking policy – contact BSU Parking Control – Student Union Building
- Access to campus recreational facilities
- Professional library privileges
- Free city bus pass, with BSU photo ID
- Special discounts on event tickets offered to faculty and staff. For student theatre productions, pick up tickets in advance, with your Emeriti photo ID, at the Morrison Center
- Mailing notices of faculty functions and social gatherings
- Home delivery of the *University Focus* magazine
- Tuition reduction waivers for courses in which you or your spouse may wish to enroll
- Free admission to the Boise Art Museum (BAM)

Regular Guild Activities

All regular Guild activities are held at the Emeriti Center. Be sure to display your Emeriti Parking Permit, available from Parking Control in the Student Union, when using the parking lot.

Coffee Social – First Tuesday, 10:00 a.m. to Noon

Emeriti Lecture Series – Great DVD Courses
First and Second Wednesday, Noon to 2 p.m.

Book Group – Third Wednesday, Noon to 2 p.m.
See current book list in this newsletter.

Art Exhibit – Displaying “Brushes & Needles” by
Judy Kelley and Corrine Smith from February
through May.

Board Meeting – Second Monday, 10:30 – 11:30
a.m.

art

Emeriti Guild 2018 Spring Art Show – “Brushes and Needles”

The Spring Art Show will feature afghans, cross stitch, tatting, drawing, doilies and painting by two artists. The art work of Judy Kelley and Corrine Smith will hang from February through May.

Judy Kelley – Judy has always enjoyed doing things with her hands. When she was little she did many jigsaw puzzles; then at age eight her Father’s aunt taught her to crochet and her Mom taught her embroidery stitches. At age ten, she learned to tat and at fifteen, she learned to knit. She has tried bobbin lace and several other types of handcrafts. She also judges handwork at the fair.

Her husband, Larry Kelley worked at Boise State for twenty-five years. Her daughter Aline and her husband Mike, live on San Juan Island, Washington. Her son Robert and his wife Kami along with her granddaughter Reagan, live nearby in Meridian.

Corrine Smith – Corrine worked at Boise State for Extended Studies at the Gowen Field campus for twenty plus years and before that, worked as a work-study employee for Extended Studies for five years. Since retiring in 2010, she has tried to spend as much time as she can enjoying her hobbies of drawing, watercolor painting, embroidery and crochet projects. She learned to embroider and crochet at a very early age and has made many projects over the years.

Travel Corner - Prague, Czech Republic

Carol Fountain

Prague is the capital of the Czech Republic, and is becoming one of the modern, trendy tourist destinations. It was the historic capital of the Kingdom of Bohemia, and the home of several of the Holy Roman Emperors, most notably Charles IV. It was also an important part of the Hapsburg Empire and the Austro-Hungarian Empire. Prague was also an important stop in the trading routes of the medieval and middle ages. The city straddles the Vltava River, and one of the important tourist sites is the Charles Bridge from the Old Town towards the Prague Castle. On the bridge are several statues of Catholic saints, including the most famous, St. John of Nepomuk, a priest in the time of Wenceslas IV. Musicians and artisans are all along the length of the bridge; pickpockets are also plentiful along the bridge. Charles IV also founded Charles University, which remains the oldest university in Central Europe. (Continued on Page 5)

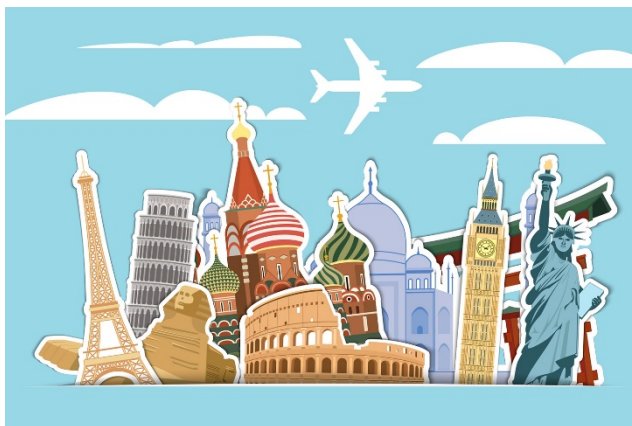
The Prague Castle is not a single building, but a compilation of buildings including the St. Vitus Cathedral, the office of the President of the Czech Republic, and several other important government buildings, and is the location of the Czech Crown Jewels.

The Old Town area is one of the most visited parts of Prague, and has an outstanding tourist attraction in the medieval Astronomical Clock on the Old Town City Hall. The Old Town Square has been the main square of the city since the 10th century. The east end of the Charles Bridge starts at the Powder Tower, a Gothic tower of the old city gates. Charles also ordered the building of the New Town, which contains Wenceslas Square, (names after Charles' son, and the King of the Christmas carol) and more than ten major museums and multiple theaters of the city. Also in Old Town is the Old Jewish Cemetery.

The Nazis entered Prague in 1939 and were expelled by Russian troops in 1945. Prague did not suffer major bombing damage during the war, but was targeted by American planes late in the war (according to the Americans this was due to a navigational error). During the Nazi occupation most of the Jewish population were expelled and killed by the Germans (the second time a majority of Jews had perished in the city). The Old Jewish Cemetery contains many headstones restored after the German tanks destroyed them during the war.

Prague has many cultural institutions and festivals. It has been the site of the production of many movies, both Czech and Hollywood. Prague residents are also proud of their breweries and beer festivals, and a Czech company owns the Budweiser brand of beer. During one of the major beer festivals, there are more than 70 brands of beer available.

The city, known as "The City of One Hundred Spires", has become one of the most popular travel destinations in Central Europe. Millions of tourists visit the city every year. It is a very walkable city but many of the streets are cobbled, so caution must be taken.





**BOISE STATE
UNIVERSITY**

Emeriti Guild Board and Information

Chair Carol Fountain	fountain88@gmail.com
Vice Chair Jane Buser	jbuser@boisestate.edu
Secretary Carol Spafford Aufdenkamp	carolsa@cableone.net
Board Members	
Beth Collier	coviano1@cableone.net
Dick Graybeal	dgrayb38@msn.com
Carol Lambert	carrolllambert@cableone.net
Anne Nelson	anelson@boisestate.edu
Nancy Otterness	nottern@boisestate.edu
Dick Rapp, Programs	rapp@boisestate.edu
Brenda Ross, Membership	bgr1boise@msn.com
Barbara Schenk, Newsletter	bschenk@boisestate.edu
Provost Office Representative	
Angie Hurley	AngelaHurley@boisestate.edu
Emeriti Guild Office – 2239 University Dr.	Mailing Address: Emeriti Center, Boise State University, MS-1003, 1910 University Dr., Boise, ID 83725-1003