

Why is regular service important?

Bikes are an important part of reducing your carbon footprint and getting good daily exercise.

Regular service can:

- Keep components functioning properly
- Prevent issues & save \$\$\$
- Prolong the life of the bike and it's parts

Cycle Learning Center

1910 University Drive
Boise, ID 83725
(1st floor of Lincoln Parking Garage)

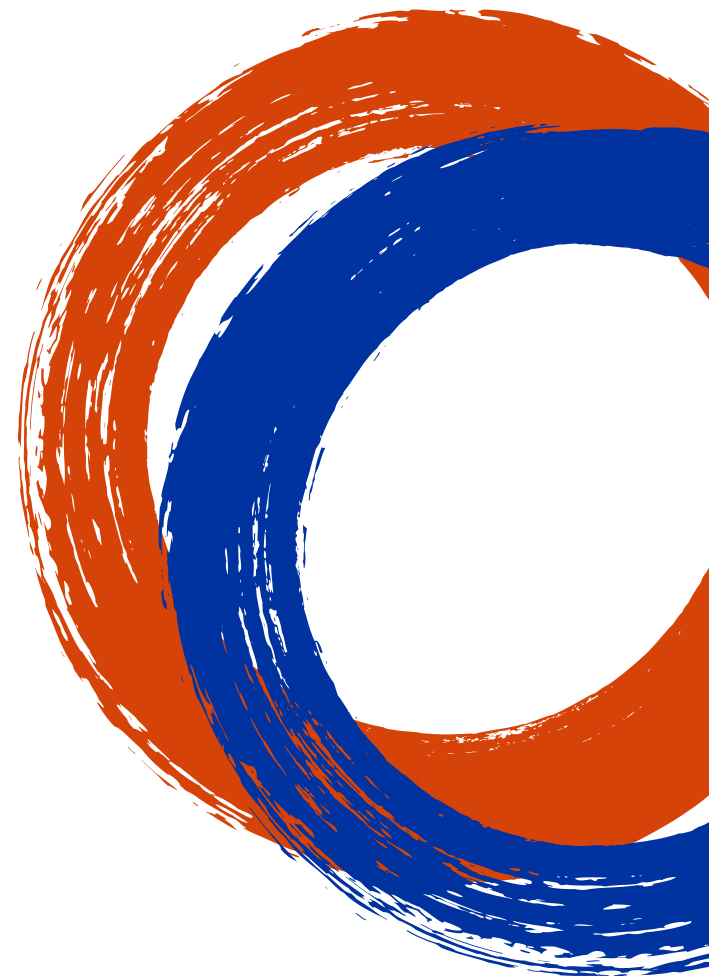


Contact

Phone: (208) 426-7433
Email: clc@boisestate.edu
www.boisestate.edu/clc



Service Packages



BOISE STATE UNIVERSITY
CYCLE LEARNING CENTER

Adjustment Package

- Brake Adjustment (f/r)
- Derailleur Adjustment (f/r)
- Wheel True (f/r)
- Bottom Bracket Adjustment
- Wheel Hub Adjustment (f/r)
- Headset Adjustment
- Chain & Cable Lube
- Bike Cleaning

Total at Regular Price: \$90

\$50 for 6 Months

Part costs are not included.
f/r = front and rear



Flat Package

Labor for flat fixes is completely covered
Labor at Regular Price:
\$6 per tube

\$20 for 6 Months

Tube costs are not included.

Gold Service Package

Includes all Packages PLUS:

- \$5 off a lock of your choice.
- Planet Bike front and rear blinky safety lights.

Total at Regular Price: \$130

\$80 for 6 Months

Part costs are not included.

Service Intervals

- Derailleur Adjust:
 - rough shifting
 - skipping gears
- Inflate tubes: 2 weeks
- Chain Clean & Lube: 2-3 weeks
 - sooner if squeaky or dirty
- Brake Adjust
 - distance between pulled brake lever and bar < thumb width
- Unusual Noises: get it checked out by a professional

